



**Centennial Coal**

---



# **Airly Mine**

Community Consultative Committee Presentation

21 April 2015

[www.centennialcoal.com.au](http://www.centennialcoal.com.au)

# AIRLY MINE

---

## AIRLY MINE – OPERATIONS UPDATE

**Airly Mine Manager, Bob Miller**

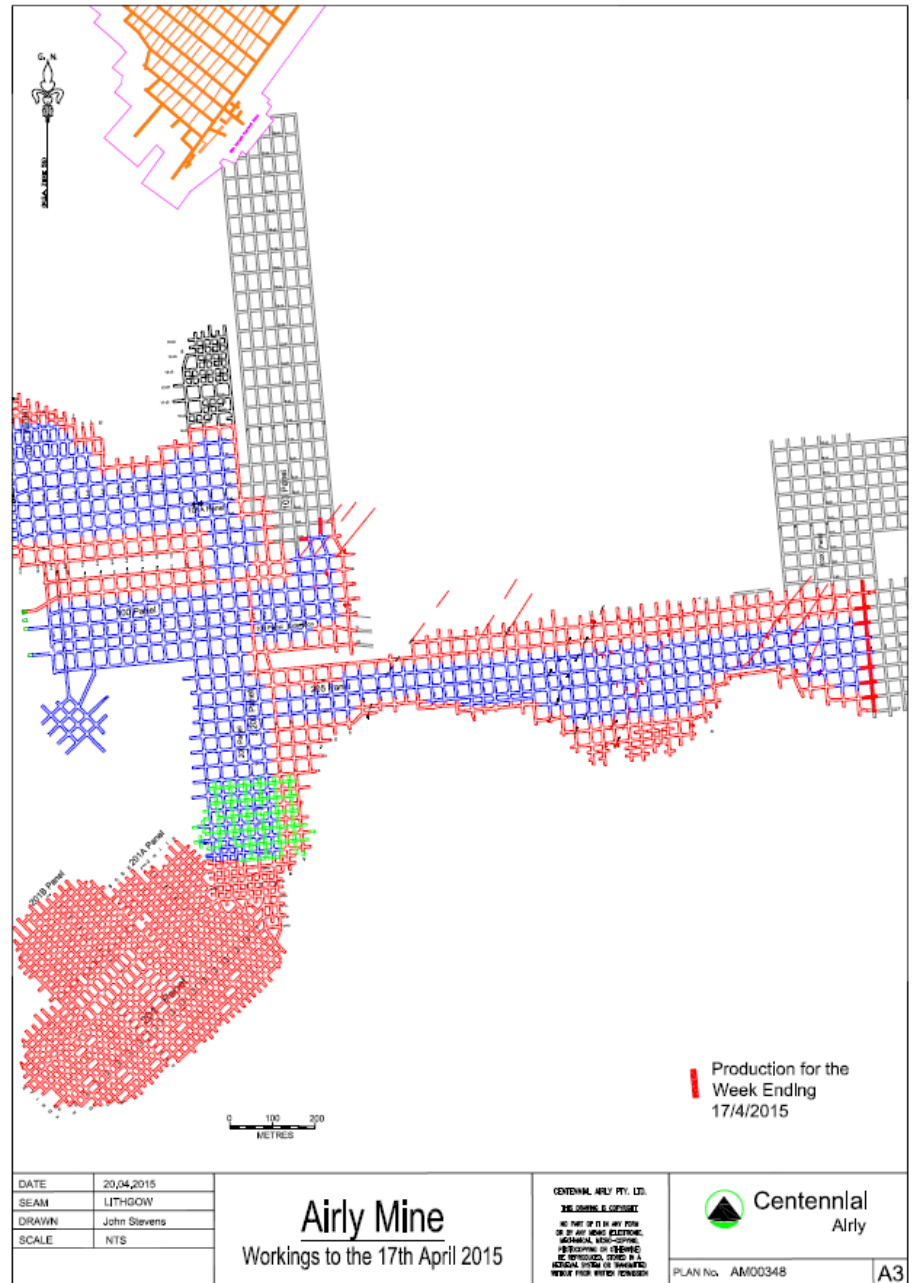


# AIRLY MINE OPERATIONS UPDATE

- Bord & Pillar development mining:
  - 205 panel (super unit)
  - 103 panel (single unit)
- Maintaining (near) original employee numbers
- Production levels exceeding expectations
- Process Improvement initiatives undertaken



**Centennial Coal**



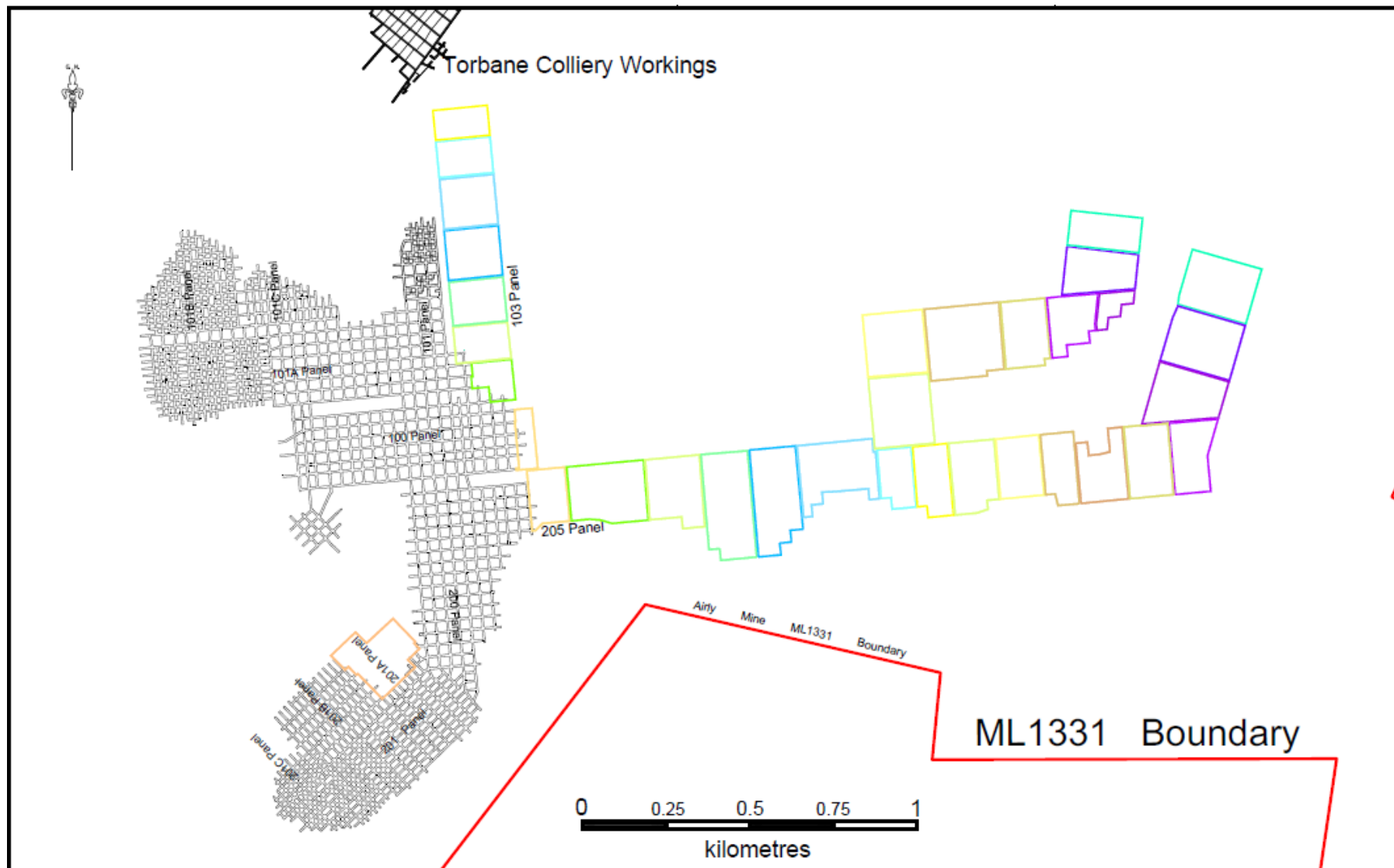
# AIRLY MINE - OPERATIONS UPDATE

---

- Conservative mine plan adopted
- Use of plant available within Centennial
- Key performance indicators achieved on month to month basis
- Coal quality improved through more suitable mining method and effective controls
- Continue to deliver to domestic and export customers by rail



# PROPOSED OPERATIONS TO OCTOBER 2015



| LEGEND                                |                |
|---------------------------------------|----------------|
| Development                           |                |
| May 2014                              | March 2015     |
| June 2014                             | April 2015     |
| July 2014                             | May 2015       |
| August 2014                           | June 2015      |
| September 2014                        | July 2015      |
| October 2014                          | August 2015    |
| November 2014                         | September 2015 |
| December 2014                         | October 2015   |
| January 2015                          |                |
| February 2015                         |                |
| Existing Workings<br>ML 1331 Boundary |                |

|                                                                                                                                                                  |
|------------------------------------------------------------------------------------------------------------------------------------------------------------------|
| <p>  LOCATION Airly<br/>  SEAM Lithgow<br/>  DRAWN J Stevens<br/>  CHECKED D King<br/>  APPROVED R Miller<br/>  SCALE Refer to scalebar                     </p> |
|------------------------------------------------------------------------------------------------------------------------------------------------------------------|

**Airly Mine**  
 Proposed Mining Schedule  
 May 2014 to October 2015

|                 |          |
|-----------------|----------|
|                 |          |
| DATE 13-06-2014 | AM00138b |

# AIRLY MINE OUTLOOK

---

- Continue to supply domestic and pursue opportunity with blending for export markets
- Undertake planned exploration program for 2015
- Respond to enquiries regarding environmental impact statement (EIS) submission
- Maintain environmental monitoring program
- Expand groundwater monitoring network
- Undertake feasibility study on secondary workings (extraction)



# AIRLY MINE

---

## AIRLY MINE – ENVIRONMENTAL PERFORMANCE

Environment & Community Coordinator, Greg Brown



# MONITORING RESULTS

## Standard Regulatory Reporting

|     | Air Quality (g/m <sup>2</sup> /month) |               |            |
|-----|---------------------------------------|---------------|------------|
|     | Dust Deposition Gauge Results         |               |            |
|     | January 2015                          | February 2015 | March 2015 |
| DM1 | 1.6                                   | 9.8           | 0.5        |
| DM2 | 0.8                                   | 2.5           | 3.6        |
| DM3 | 0.9                                   | 0.5           | 0.6        |
| DM4 | 0.7                                   | 0.4           | 0.4        |



Non-compliance

Compliance





# FEBRUARY AIR QUALITY MONITORING RESULTS

---

- Horses were observed grazing near DM1 at the time of sampling and analysis.
- Further examination of the sample at DM1 indicated that 7.0 g/m<sup>2</sup>/month of the insoluble matter was combustible matter.
- The other dust monitoring stations (located closer to Airly Mine) recorded depositional dust levels less than 2.6 g/m<sup>2</sup>/month during February 2015.



# MONITORING RESULTS

## Standard Regulatory Reporting

|             | Discharge water quality   |                               |                                 |                     |
|-------------|---------------------------|-------------------------------|---------------------------------|---------------------|
|             | pH                        | Total Suspended Solids (mg/L) | Electrical Conductivity (µS/cm) | Oil & Grease (mg/L) |
|             | January 2015 – March 2015 |                               |                                 |                     |
| <b>LDP1</b> | No discharge              |                               |                                 |                     |
| <b>LDP2</b> | No discharge              |                               |                                 |                     |
| <b>LDP3</b> | No discharge              |                               |                                 |                     |



Non-compliance

Compliance



# MINING OPERATIONS PLAN

---

- Received a letter during January 2015 from the Division of Resources and Energy, granting approval for an Addendum to the Mining Operations Plan 2014-2016;
- Two plans (AM00138b and AM00138c) titled *Airly Mine Proposed Mining Schedule May 2014 to October 2015* were included in Appendix 2 of the Environmental Assessment for the Extension of Time Modification. These plans are now also included as an addendum to the current Mining Operations Plan.



# INDEPENDENT ENVIRONMENTAL AUDIT

---

- Required under Condition 44 in Modification No.3 to development consent DA 162/91;
- Received a letter during February 2015 from the Department of Planning and Environment providing approval for the appointment of consultants nominated to undertake an independent environmental audit at Airly Mine;
- Site inspection by auditors undertaken on the 19<sup>th</sup> and 20<sup>th</sup> March 2015 at Airly Mine
- Expect environmental audit conducted by EPA to take place in April 2015



# ENVIRONMENTAL MANAGEMENT STRATEGY

---

- Required under Condition 36 in Modification No.3 to development consent DA 162/91;
- Written correspondence in February 2015 to the Department of Planning and Environment with a copy of the Environmental Management Strategy for Airly Mine.



# LANDHOLDER LIAISON PROGRAM

---

- Exploration drilling activity proposed to be undertaken during 2015;
- Written correspondence in March 2015 to the National Parks and Wildlife Service, Department of Trade and Investment, Regional Infrastructure and Services - Division of Resources and Energy and the Crown Lands Division with a copy of the Landholder Liaison Program for exploration activity at Airly Mine.



# AIRLY MINE

---

## AIRLY MINE – COMMUNITY ACTIVITY

**Environment & Community Coordinator, Greg Brown**



# COMMUNITY ACTIVITY

---

- Conducted a meeting during March with personnel from the Ambulance Service of NSW, NPWS and the NSW Police Force. The meeting included an inspection of the underground mine workings and an inspection of the Communications Tower located on Genowlan Mountain;
- Received notification regarding an aerial shoot to be undertaken on the 25<sup>th</sup> March over the Mugii Murum-ban State Conservation Area and coordinated monitoring activity to avoid activity on the SCA on this date;
- Attended and provided updates at the Capertee and District Progress Association Monthly Meetings;





# AIRLY MINE

---

## AIRLY MINE EXTENSION PROJECT

**Project Manager, David King**



# THE ASSESSMENT PROCESS UPDATE

| <b>ACTION</b>                                            | <b>TIMING</b> | <b>STATUS</b> |
|----------------------------------------------------------|---------------|---------------|
| Briefing Paper and Director General's Requirements       | Q4 2012       | COMPLETED     |
| Referral of project to Federal Government under EPBC Act | Q4 2013       | COMPLETED     |
| Revised requirements (to include Federal Requirements)   | Q1 2014       | COMPLETED     |
| Conduct various Impact Assessments                       | Q1 2014       | COMPLETED     |
| Prepare Environmental Impact Statement (EIS)             | Q1 2014       | COMPLETED     |
| Adequacy Review of EIS                                   | Q3 2014       | COMPLETED     |
| EIS Exhibition                                           | Q4 2014       | COMPLETED     |
| Response to submissions                                  | Q1 2015       | COMPLETED     |
| Government Review of EIS (including PAC)                 | Q2 2015       | IN PROGRESS   |
| Project determination                                    | Q3 2015       | NOT STARTED   |

# AIRLY MINE EXTENSION PROJECT ACTIVITY

---

- Environmental Survey and Monitoring
  - (Surface water, Groundwater, Terrestrial / Aquatic Ecology)
- Mining Feasibility
  - Board presentations made
  - LOM feasibility budget being prepared
- Exhibition completed
- Response to submissions completed
  - 34 public objections, 116 supporting
  - 8 special interest groups objecting, 3 supporting
  - 9 Government agencies made submissions requiring response
- Responses to final agency comments completed (except DRE)



# AIRLY MINE EXTENSION UPCOMING PROJECT ACTIVITY

---

- Consideration and recommendation by DP&E
- Planning and Assessment Commission
  - Site visit
  - Public hearing
- Project determination
  - DoE conditions
  - DP&E conditions
  - PAC conditions
- Exploration program to commence in June 2015



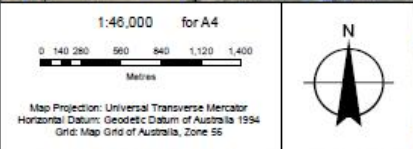
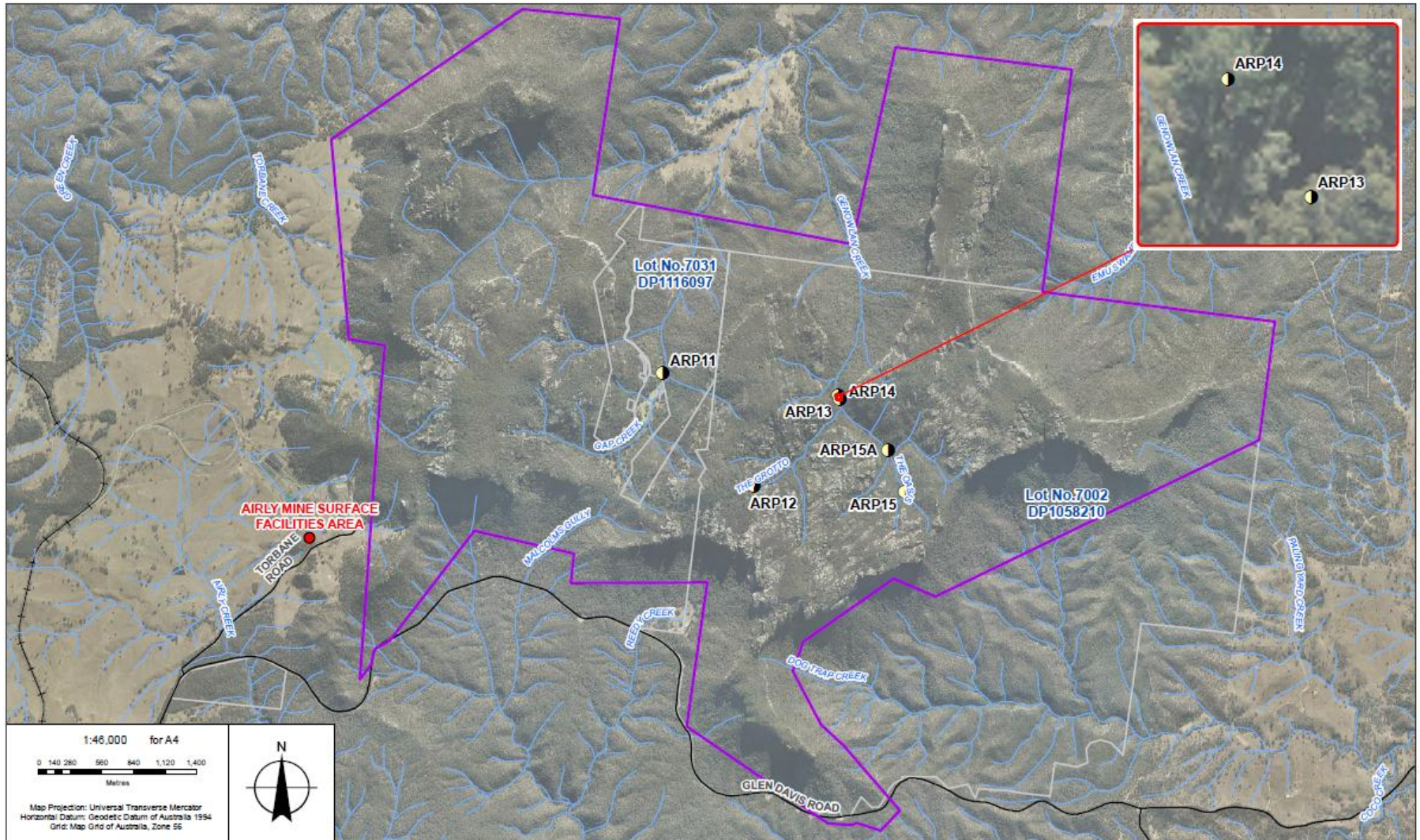
# PROPOSED EXPLORATION PROGRAM

---

- 5 holes proposed
- ARP11 – Gap Creek. Permian drawdown
- ARP 12 – upstream end of the Grotto. Surface water monitoring
- ARP13 – Genowlan Creek near the Oasis. Surface water monitoring. Permian drawdown. Shoalhaven and Devonian ground water monitoring
- ARP14 – Genowlan Creek near the Oasis, shallow borehole monitoring water levels in the alluvium.
- ARP15 – Genowlan Creek upstream. Permian drawdown. Shoalhaven and Devonian ground water monitoring



# PROPOSED EXPLORATION - LOCATIONS



**GHD**

- Airly Surface Facilities Area
- Proposed Bore
- A232 Boundary
- Road
- Cadastre
- Waterway
- + Railway

© 2015. Whilst every care has been taken to prepare this map, GHD, Centennial and LPI make no representations or warranties about its accuracy, reliability, completeness or suitability for any particular purpose and cannot accept liability and responsibility of any kind (whether in contract, tort or otherwise) for any expenses, losses, damages and/or costs (including indirect or consequential damage) which are or may be incurred by any party as a result of the map being inaccurate, incomplete or unsuitable in any way and for any reason.

|          |                   |
|----------|-------------------|
| LOCATION | Airly             |
| SEAM     | Lithgow           |
| DRAWN    | I.G.              |
| CHECKED  | F.M.              |
| APPROVED | S.G.              |
| SCALE    | refer to scalebar |

Proposed Borehole Locations

**Centennial Airly**

|      |           |          |
|------|-----------|----------|
| DATE | 2/02/2015 | Figure 1 |
|------|-----------|----------|

## MODIFICATION 3 – DA162/91

---

- Received Modification 3 approval on 9/10/14
- First workings confirmed (condition 13A) by DRE 22/12/14
- Extraction Plan currently under development for ongoing pillar quartering



# AIRLY MINE

---

**THANK YOU**

