

# Minutes of Inglenook Exploration Project Community Consultative Committee Meeting

Date and time: Tuesday 24/11/2015, 10:00am  
Location: Inglenook Project Office, "Spring Park",  
Running Stream

<b>Present</b>	Margaret MacDonald-Hill (MMH)	Chair
	Julie Moloney (JM)	Office of Resources & Energy, Mineral Resources
	Neva Lilley (NL)	Inglenook Community Representative
	Greg Banning (GB)	Centennial Coal Representative
	Thomas Dubos (TD)	Centennial Coal Representative
	Alanna Ryan (AR)	Centennial Coal Representative
	Esme Martens (EM)	Inglenook Community Representative & MWRC Representative
	Jolieske Lips (JL)	RSWUA & Inglenook Community Representative
	Mitchell Clapham (MC)	Inglenook Community Representative

<b>Apologies</b>	Cr Ray Thompson (CT)	Lithgow City Council Representative
------------------	----------------------	-------------------------------------

<b>Welcome and Introduction</b>	The Chair opened the formal meeting at 10:03am welcomed all attendees and thanked them for their participation.
---------------------------------	---

<b>Declarations of Interest</b>	MMH noted her position as Independent Chair appointed by the Minister for Resources & Energy. NL's family as owners of mineral rights in relation to the Inglenook EL. EM as owner of mineral rights in relation to the Inglenook EL, member of Charbon and Airly CCC. JL as owner of mineral rights in relation to the Inglenook EL.
---------------------------------	--

<b>Confirmation of previous minutes</b>	Minutes were confirmed as a true record moved by NL and seconded by JM.
---	---

<b>Business arising</b>	<p>EM raised that no other councillor was prepared to be a MWRC representative on the CCC and that she is a community representative first and would retain only that representation if need be. MMH commented that all the members of the committee understand the status of EM dual representation on the CCC.</p> <p>MC commented that he was approached by a member of the community who asked whether a new community representative would be appointed to the CCC. MC added that this would allow for the opportunity of an additional community representative and community view around the table. MMH stated that the status quo would remain as the Minister had confirmed the membership renewal of all committee members. MMH noted that JL also had dual representation; as a community member and representative of RSWUA. When EM was appointed she was appointed as a community representative first and that the MWRC representation came at a later date. EM asked if there was an issue with her dual representation on the CCC. The committee confirmed there was no issue with EM having a dual capacity.</p> <p>JL commented that it was interesting to read in the previous minutes about AL12. JL asked why Centennial did not proceed with the purchase of AL12. GB responded that economically it did not make sense at the time.</p> <p>TD tabled the Inglenook November Community Newsletter for review and comment by the CCC. One amendment was suggested. JL asked if the Exploration Licences (EL) had already been renewed. TD commented that the renewals were still to be accepted by the department. MMH asked if this was an automatic</p>
-------------------------	---

approval process. JM responded that the conditions of the EL are deemed to continue past expiry of the licence until a renewal determination is given by the department.

NL asked about the Access Agreements negotiated in 2015 and where they were located. TD replied that one location was within the Melrose licence area and one along Razorback Road.

A brief discussion followed in relation to the naming of the EL's. GB asked who names the ELs. JM responded that the department names the ELs and typically avoids property names to avoid confusion. JL asked if there was a deliberate attempt with the naming of ELs to mislead the community as the licence named Cherry Tree Hill does not actually cover Cherry Tree Hill. JM responded that the maps and names of the licences are made public and that there is no intention to mislead.

JL asked if drilling will happen in 2017 if the low coal price was to continue. GB responded that it will be reviewed again in 2016 as part of the budget review process. If prices remain low it could possibly be delayed again.

#### **Reports:**

Centennial provided a presentation.

GB provided a company update. JL asked where Myuna is located and why there was a reduction in the workforce. GB responded that Myuna is located near Lake Macquarie. When Newstan was placed on care and maintenance employees were transferred to Myuna colliery with a view that Myuna would increase production. The geological conditions at Myuna are challenging and it is not efficient to run the mine with additional units. The restructure will result in the transfer of 21 employees from Myuna to Centennial's Mandalong Mine. Unfortunately, the restructure will result in the retrenchment of up to 30 Myuna employees.

JL asked why you would extend Airly Colliery when you have Angus Place on Care and Maintenance. GB explained that the two mines operate under different mining methods and production targets. AR commented that both Airly and Angus Place are extension projects into new areas to continue operations. GB commented that a significant financial investment is required to get Angus Place going as they need to develop new longwall blocks to continue operating.

MC asked how the Clarence water issue was going. AR responded that the clean-up has been undertaken and is being reviewed as of several weeks ago. Positive feedback has been received around the approach following the event from government regulators. GB commented that there is an ongoing investigation into the incident. MMH commented that she thought the EPA posted some sort of summary on their web page once the investigation is complete.

AR provided an update on environmental monitoring and presented some water quality results for various monitoring locations throughout the project. A general discussion followed around the various quality results and creek systems. JL commented about the Carwell Creek being dry and how sample points were missing due to this. AR noted that it could be possible to conduct the sampling following a rainfall event to ensure water is collected from Carwell Creek. JL commented that initially the water may be very acidic and if the sample could be taken after the initial flush of water. MC commented he thought the samples collected within Carwell Creek are not reflective of soil sampling he is aware of in the area. Feedback on the presentation of data was requested.

**Correspondence** Nil

#### **General Business**

MC asked if compensation for landholders time will be incorporated into the access agreement as this will soon be a legislated outcome from the Walker Review. AR confirmed that once legislated Centennial would adhere to the requirement.

JL asked what the impact to the Charbon rehabilitation program would be given Big Rim have now gone into liquidation. GB commented that an Environmental Impact Statement was being prepared for the mine site rehabilitation. EM noted that the Charbon CCC will monitor the rehabilitation very closely. JM noted that Centennial would have submitted a large bond for Charbon mine. This bond would be held by the government until the rehabilitation was complete. The rehabilitation would need to be shown to be self-sustaining prior to the bond release.

The committee discussed the meeting frequency and dates for 2016. It is proposed to meet on March 22 and September 20 unless an extraordinary meeting is called. It is proposed to visit an underground operation at the

March 22 meeting.

- Meeting closed** The Chair thanked everyone for their attendance and efforts in 2015, wished each member a safe and happy Christmas and formally closed the meeting at 11.05am.
- Next meeting** Next meeting scheduled for Tuesday 22 March 2016. Time and venue to be confirmed by Chair once details of the proposed underground visit are known.
- Action Items** GB to confirm underground visit for next CCC meeting.



**Centennial Coal**

---



## **Inglenook Exploration Project**

**Community Consultative Committee  
Tuesday November 24, 2015**

[www.centennialcoal.com.au](http://www.centennialcoal.com.au)

### **Company Update**

---

- Coal price continued to drop.
- Continuing focus to reduce costs at operations and projects.
- Reduction in workforce at Myuna Colliery.
- Springvale approval granted.
- Airly PAC review completed.



**Centennial Coal**

## Project Update

---

### Exploration:

- No exploration drilling in 2015.

### Environment:

- Surface water, groundwater and meteorological monitoring continued.

### Incidents:

- Nil



Centennial Coal

## Exploration Activities for 2016

---

### Exploration:

- No planned exploration drilling for 2016. If there is any change to this the CCC will be notified.
- Drilling Access Agreement negotiations.
- Application for the renewal of A414.



Centennial Coal

## Environment and Community Activities for 2016

---

### Environment:

- Continuation of surface water and groundwater monitoring.
- Water monitoring to continue every third quarter.
- Cessation of Flora and Fauna monitoring.



Centennial Coal

## Water Monitoring

---

- Centennial has continued water monitoring since the Water Census in 2010.
- Centennial collects surface water and groundwater quality samples across as a continuation of the Water Census.
- Baseline data may be used in a future EIS application.

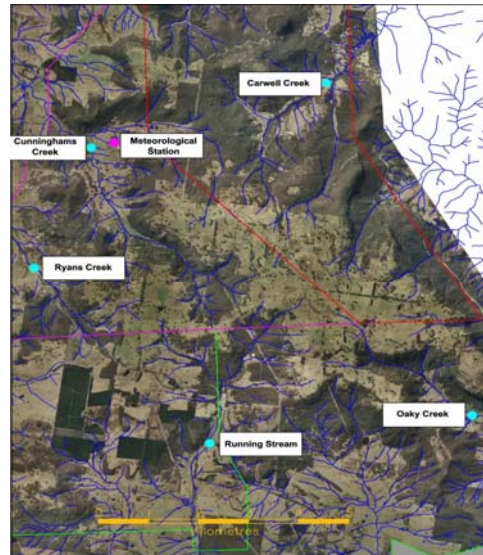


Centennial Coal



## Sampled Creek Systems

---



Centennial Coal

## Water Monitoring Review

---

- A review of water quality monitoring will be presented for:
  - Carwell Creek
  - Cunninghams Creek
  - Running Stream
  - Ryans Creek
  - Oaky Creek
- pH and EC are indicators of water quality for drinking, stock and habitat.
- Centennial is collecting the information as a continuation of the water census.



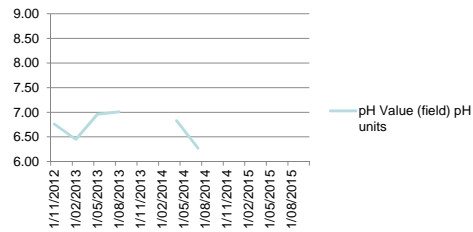
Centennial Coal



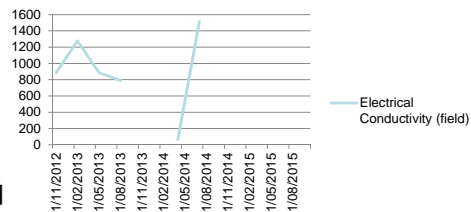
## Carwell Creek

---

### Carwell Creek pH (field)



### Carwell Creek Electrical Conductivity (field) (uS/cm)



Note, data gaps due to no creek flow



Centennial Coal

## Carwell Creek

---

- pH range has varied 6 and 7
- EC has range between 50 and 1450

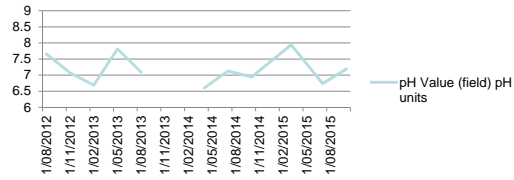


Centennial Coal

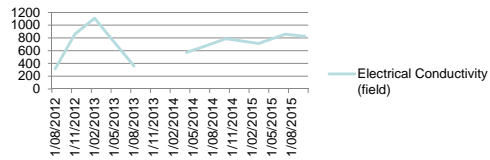
## Cunninghams Creek

---

Cunninghams Creek pH (field)



Cunninghams Creek Electrical Conductivity (field) (uS/cm)



Centennial Coal

## Cunninghams Creek

---

- pH range between 6.5 and 8
- EC has range between 250 and 1100

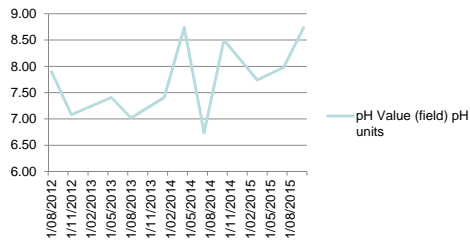


Centennial Coal

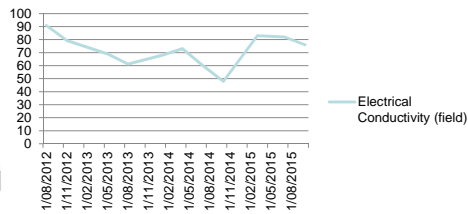
## Running Stream

---

Running Stream pH (field)



Running Stream Electrical Conductivity (field) (uS/cm)



Centennial Coal

## Running Stream

---

- pH range between 6.5 and 9
- EC has range between 50 and 95

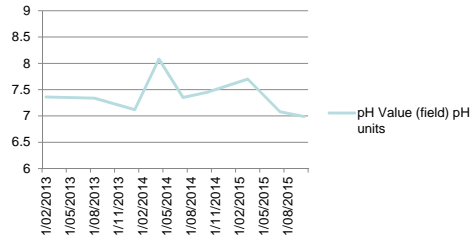


Centennial Coal

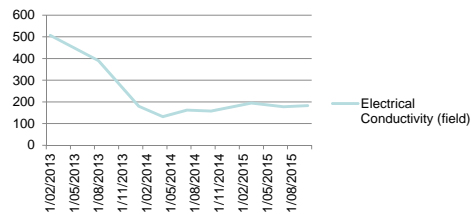
## Oaky Creek

---

Oaky Creek pH (field)



Oaky Creek Electrical Conductivity (field) (uS/cm)



## Oaky Creek

---

- pH range between 7 and 8.5
- EC has range between 100 and 510



**Questions & General Discussion**

---

**THANK YOU**



**Centennial Coal**