



**Centennial Coal**



# **Airly Mine**

Community Consultative Committee (CCC) Presentation

28 July 2015

[www.centennialcoal.com.au](http://www.centennialcoal.com.au)

# AIRLY MINE

---

## AIRLY MINE – OPERATIONS UPDATE

**Airly Mine Manager, Bob Miller**



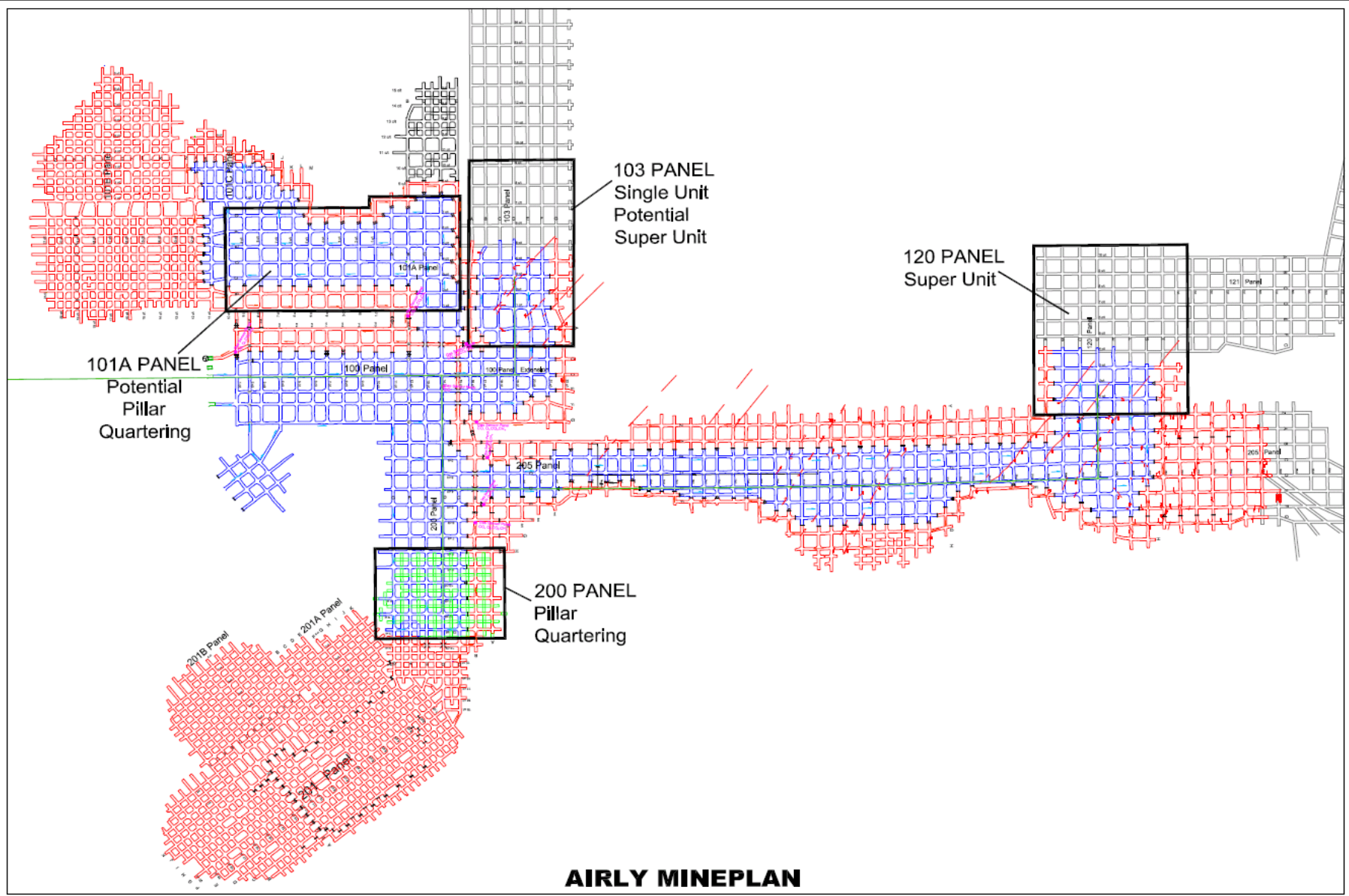
# Mining Operations Update

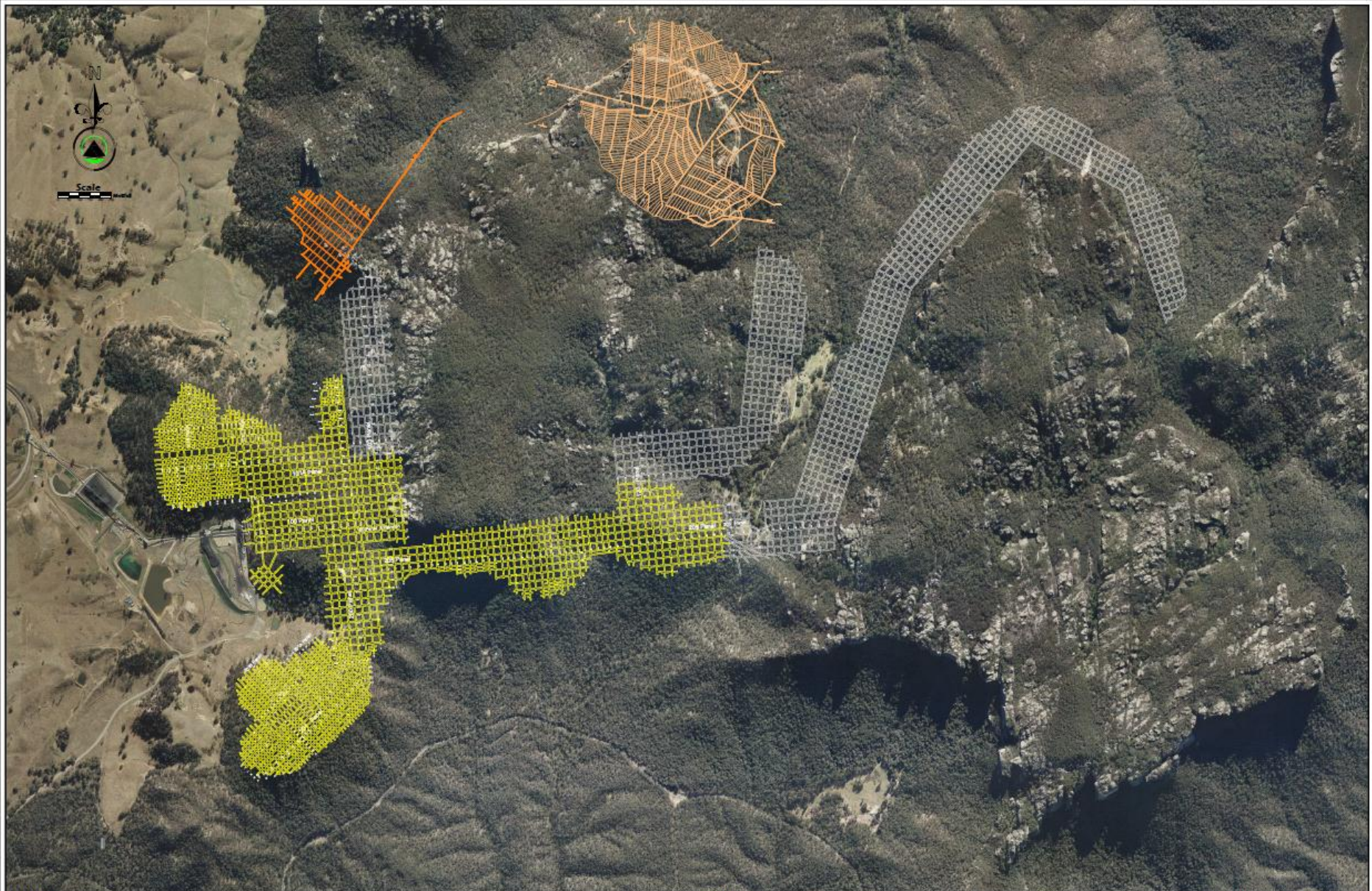
---

- Achieved all Key Performance Indicators for Health & Safety
- Bord and pillar development mining systems continued
  - 120 Panel “super unit”
  - 103 Panel “single unit”
- Production levels continue to exceed budget and forecast
- Employee numbers have increased by 5 to 63 persons
- Process improvements initiatives have been undertaken to increase competitiveness in productivity and cost performance
- Focus remains on improving coal quality
- Currently supplying both domestic (Eraring Power Station) and export customers
- In final stages in the development of the 2016 – 2018, 3 year plan and budget



# Current & Projected Workings





**LEGEND:**

-  Current Workings
-  Proposed Workings

**NOTES:**

BY: John Stevens	DATE: 21-07-2015
NO: AM00409	PROJECT: N:\Survey\PLANS
Technical Services Department	
SCALE: 1:8000	A4L Dial Tall

**AIRLY MINE**

**Mine Plan  
Over Aerial Photo**

Centennial  
  
Coal

Copyright © 2015  
All Rights Reserved  
Centennial Coal

# AIRLY MINE OUTLOOK

---

- Continue to supply domestic and pursue opportunity with blending for export markets
- Undertake planned exploration program for 2015
- Advise community of PAC hearing dates and location regarding environmental impact statement (EIS)
- Maintain environmental monitoring program
- Expand groundwater monitoring network
- Undertake feasibility study on secondary workings (extraction)



# AIRLY MINE

---

## AIRLY MINE – ENVIRONMENTAL PERFORMANCE

**Environment & Community Coordinator, Sam Price**



# Environmental Management

---

- Flora & Fauna monitoring conducted in the Mugii-Murum-ban State Conservation Area in May 2015.
- Autumn aquatic ecology monitoring conducted in June 2015.
- Global Acoustics to conduct annual noise monitoring in August 2015.
- Spring/Summer weed spraying program to get underway in September 2015.



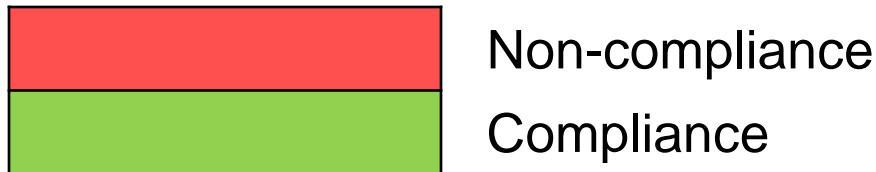


# Monitoring Results – Dust Q2

## Standard Regulatory Reporting

---

	Air Quality (g/m <sup>2</sup> /month)		
	Dust Deposition Gauge Results		
	April 2015	May 2015	June 2015
DM1	0.6	0.6	0.3
DM2	0.4	0.5	0.3
DM3	0.5	0.6	0.2
DM4	0.5	0.7	0.3



# Monitoring Results - Water

## Standard Regulatory Reporting

	Discharge water quality			
	pH	Total Suspended Solids (mg/L)	Electrical Conductivity (µS/cm)	Oil & Grease (mg/L)
	January 2015 – June 2015			
<b>LDP1</b>	No discharge			
<b>LDP2</b>	No discharge			
<b>LDP3</b>	No discharge			



Non-compliance

Compliance



## Independent Environmental Audit (IEA)

---

- Required under Condition 44 in Modification No.3 to development consent DA 162/91;
- Site inspection by independent auditors undertaken on the 19<sup>th</sup> and 20<sup>th</sup> March 2015 at Airly Mine;
- Environmental Audit Report and Airly Mine's response to Auditor's Recommendations was delivered to the Department of Planning & Environment on the 22<sup>nd</sup> June 2015. These documents have also been published on the Centennial Airly website.
- EPA Environmental Audit and Risk Based Licensing (RBL) review occurred in April 2015.



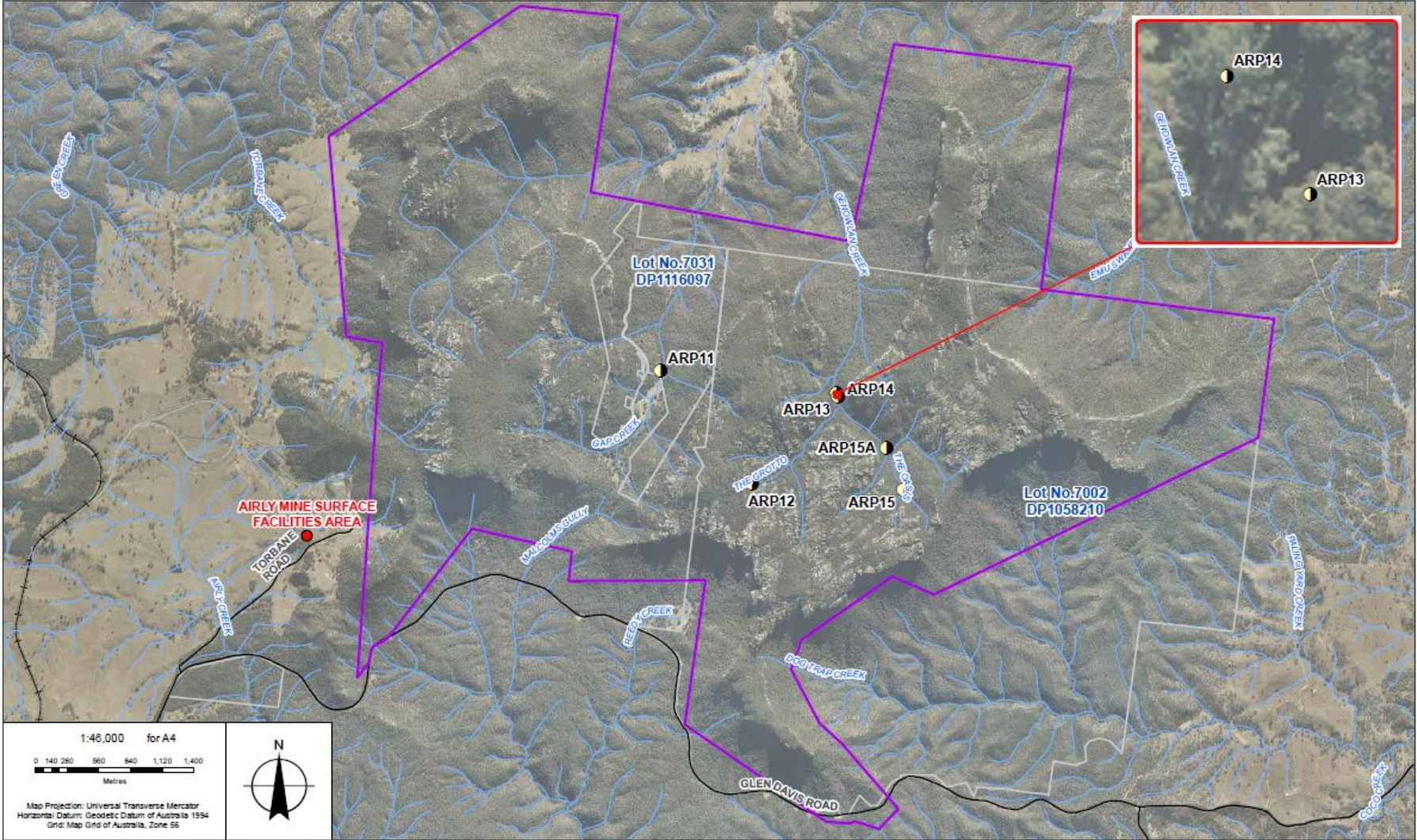
# Exploration/Ground-water Monitoring

---

- Exploration drilling activity is proposed to be undertaken from August to December 2015;
- The Review of Environmental Factors (REF) for the 2015 Drilling Program was delivered to National Parks and Wildlife Service (NPSW), Department of Trade and Investment, Regional Infrastructure and Services - Division of Resources and Energy (DRE) and NSW Office of Water in June 2015;
- Airly Mine is still currently awaiting approval from all above listed Government Departments / Regulators.



# Proposed Exploration - Locations



1:46,000 for A4

0 140 280 560 840 1,120 1,400  
Metres

Map Projection: Universal Transverse Mercator  
Horizontal Datum: Geodetic Datum of Australia 1994  
Grid: Map Grid of Australia, Zone 56

- Airly Surface Facilities Area
- Cadastre
- Proposed Bore
- Waterway
- A232 Boundary
- Railway
- Road

© 2015. Whilst every care has been taken to prepare this map, GHD, Centennial and LPI make no representation or warranties about the accuracy, reliability, completeness or suitability for any particular purpose and cannot accept liability and responsibility of any kind (whether in contract, tort or otherwise) for any expenses, losses, damages and/or costs (including indirect or consequential damage) which are or may be incurred by any party as a result of the map being inaccurate, incomplete or unsuitable in any way and for any reason.

LOCATION	Airly
SEAM	Lithgow
DRAWN	I.G.
CHECKED	F.M.
APPROVED	S.G.
SCALE	refer to scalebar

Proposed Borehole Locations

DATE	2/02/2015	Figure 1
------	-----------	----------

# Extension Project Update

<b>ACTION</b>	<b>TIMING</b>	<b>STATUS</b>
Briefing Paper and Director General's Requirements	Q4 2012	COMPLETED
Referral of project to Federal Government under EPBC Act	Q4 2013	COMPLETED
Revised requirements (to include Federal Requirements)	Q1 2014	COMPLETED
Conduct various Impact Assessments	Q1 2014	COMPLETED
Prepare Environmental Impact Statement (EIS)	Q1 2014	COMPLETED
Adequacy Review of EIS	Q3 2014	COMPLETED
EIS Exhibition	Q4 2014	COMPLETED
Response to submissions	Q1 2015	COMPLETED
Government Review of EIS (including PAC)	Q2 2015	IN PROGRESS
Project determination	Q3 2015	NOT STARTED

# AIRLY MINE

---

## AIRLY MINE – COMMUNITY ACTIVITY

**Environment & Community Coordinator, Sam Price**



## COMMUNITY ACTIVITY

---

- Sponsorship given to the 'Rylstone District Wild Dog Association';
- Attended and provided updates at Local Land Services meeting held at Glen Alice Hall on the 14<sup>th</sup> July 2015;
- Attended and provided updates at the Capertee and District Progress Association Monthly Meetings;
- Commissioned local earth moving contractor 'Lilly's Plant Hire' to undertake some improvement works at the Capertee Community Hall.





# AIRLY MINE

---

**THANK YOU**

