



Centennial Coal



Ivanhoe No.2 Colliery

EPL 631

Environmental Monitoring Data

September 2018

TABLE OF CONTENTS

1. INTRODUCTION	1
2. AIR QUALITY MONITORING	2
3. SURFACE WATER QUALITY.....	3
3. INCIDENTS	3
4. COMPLAINTS.....	3
5. CORRECTION LOG.....	3

FIGURES

Figure 1 - Depositional Dust 12-month rolling average August 2017 – July 2018.....	2
--	---

TABLES

Table 1 – Licence Information	1
Table 2 – Supporting Information for Monitoring Points.....	1
Table 3 – Depositional Dust (g/m ² /month).....	2
Table 4 – Water Quality Monitoring Results.....	3

1. INTRODUCTION

As per conditions M1 to M5 of EPL 631, this report summarises environmental monitoring results for Ivanhoe No.2 Colliery for the September 2018 period. Monitoring sites are shown in Appendix 1.

A summary of the licence information is provided in the following tables.

Table 1 shows the licence information and Table 2 summarises the dates and units for monitoring data for the reporting period. LDP002 and LDP004 did not discharge during the reporting period and therefore sampling of discharge was not required.

Table 1 – Licence Information

Environment Protection Licence Number	631
Licensee's Name	Ivanhoe Coal Pty Ltd
Licensee's Address	Level 18, BT Tower, 1 Market Street Sydney NSW 2000
Link to full license on the EPA website	http://www.epa.nsw.gov.au/prpoeoapp/ViewPOEOLicence.aspx?DOCID=31062&SYSUID=1&LICID=631

Table 2 – Supporting Information for Monitoring Points

Parameter	Monitoring Frequency	Unit of Measure	September 2018	
			Sampling Date	Published Date
LDP002 (Point 2) Oil & Grease	Monthly during discharge	mg/L	No discharge	N/A
LDP002 (Point 2) pH	Monthly during discharge	pH units	No discharge	N/A
LDP002 (Point 2) Total Suspended Solids	Monthly during discharge	mg/L	No discharge	N/A
LDP002 (Point 2) Filterable iron	Monthly during discharge	mg/L	No discharge	N/A
LDP004 (Point 4) Oil & Grease	Monthly during discharge	mg/L	No discharge	N/A
LDP004 (Point 4) pH	Monthly during discharge	pH units	No discharge	N/A

2. AIR QUALITY MONITORING

The air quality monitoring results for the reporting period are summarised in Table 3.

Table 3 – Depositional Dust (g/m²/month)

DG-1
14.26 ¹

EPL 631 does not require air quality to be monitored and hence does not include a licence limit for depositional dust. A 12-month rolling average air quality criteria of 4 g/m²/month is commonly used for comparison purposes (Figure 1).

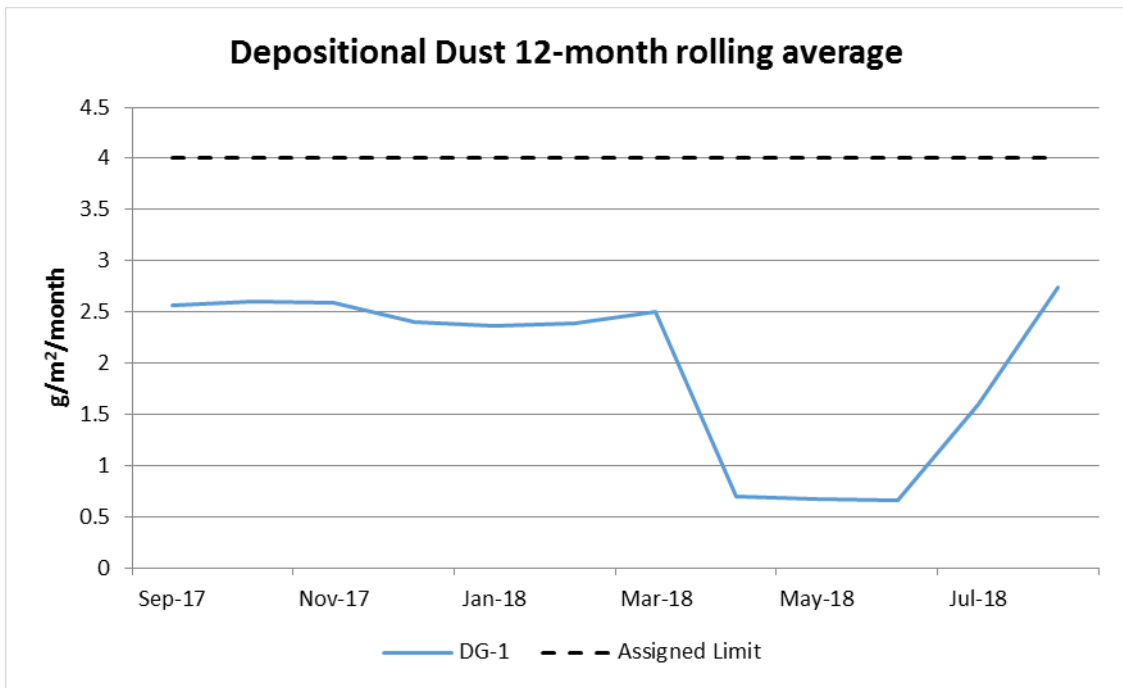


Figure 1 - Depositional Dust 12-month rolling average September 2017 – August 2018

¹ The depositional dust value for DG-1 for August 2018 is indicative only and not the final result. Centennial are awaiting results from fine particle analysis at the time of publication of this report. Confirmation of the final result will be provided in future reports.

3. SURFACE WATER QUALITY

Surface water pH, total suspended solids, filterable iron and oil & grease are monitored at LDP002 during discharges (Table 4). Surface water pH and oil & grease are monitored at LDP004 during discharges. There were no discharges from LDP002 or LDP004 in August 2018 therefore there were no opportunities to collect samples.

Table 4 – Water Quality Monitoring Results

Discharge Point	Parameter	Unit of Measure	EPA Limit	September 2018 Results
LDP002	pH	pH	6.5 – 8.5	N/A
LDP002	Total Suspended Solids	mg/L	30	N/A
LDP002	Filterable Iron	mg/L	3	N/A
LDP002	Oil & Grease	mg/L	10	N/A
LDP004	pH	pH	6.5 – 8.5	N/A
LDP004	Oil & Grease	mg/L	10	N/A

3. INCIDENTS

No incidents occurred at Ivanhoe No.2 Colliery during the reporting period.

4. COMPLAINTS

No complaints were received in regard to Ivanhoe No.2 Colliery during the reporting period.

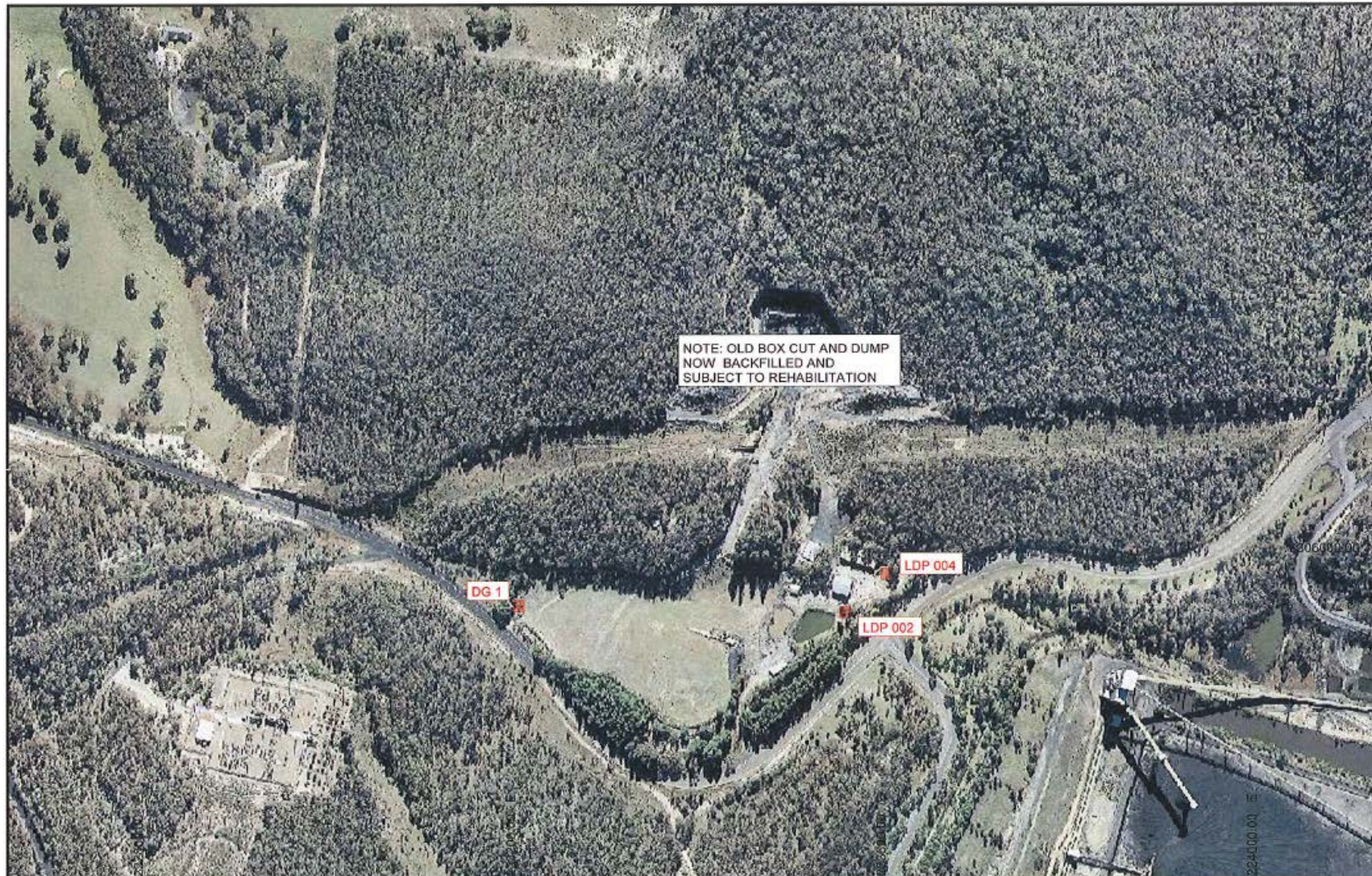
5. CORRECTION LOG


No corrections to previously published data are required.

Appendix 1

Monitoring Site Locations

Environmental Monitoring Results Summary – Ivanhoe No.2 Colliery



	CRAVEN, ELLISTON & HAYES (LITHGOW) PTY LIMITED CONSULTING LAND, ENGINEERING & MINING SURVEYORS "Astrolabe", Rutherford Lane, Lithgow, NSW, 2790 Phone: (02) 6351 2281 Fax: (02) 6352 1339 Email: survey@ceh.com.au		DATE 12/07/2012	IVANHOE NO. 2 ENVIRONMENTAL MONITORING SITES LOCATION PLAN	DRAWING No: IVN2:LDP001
			AMENDED		
			SURVEYOR AM/GM		
			DRAWN G MUIR		
			CHECKED R HUNT		SCALE - 1:4000 DATUM: MGA (Zone 56) / AHD

Border size = 370mm x 267mm on A3 paper.