



MANDALONG MAILBOX

News to our community

 CENTENNIAL

October 2023 Newsletter



MANDALONG MINING UPDATE

Mandalong Mine is currently undertaking mining in the Mandalong South Extension Area under Development Consent SSD-5144, approved in 2015. Mining in this new area is a continuation of the existing operation; Longwall 25 was the first longwall panel, commencing at the start of 2019. Since then, nine longwalls have now been extracted, with Longwall 57 commencing during September 2023.

Mandalong Mine conducts subsidence monitoring following the completion of each longwall panel to confirm that subsidence predictions and surface impacts are consistent with the subsidence model.

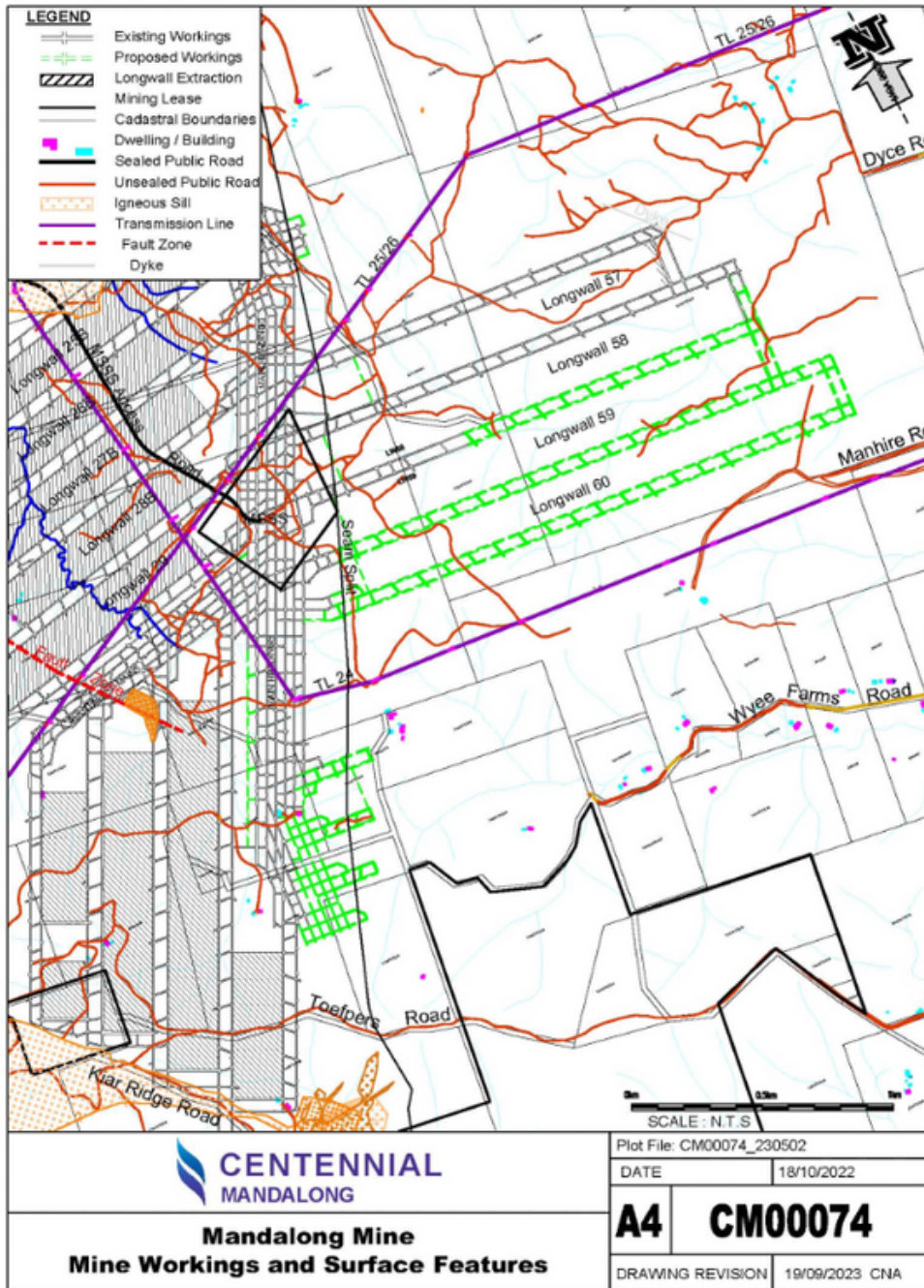
Subsidence monitoring results over the nine completed panels — Longwalls 25-34 — have confirmed the reliability of the subsidence model and predictions for the Mandalong Southern Extension Area.

Mandalong Mine has also commenced preparing the Extraction Plan application for the Longwalls 39-43. Each landowner affected by the mining application will be contacted by a Centennial Approvals Coordinator over the coming months to provide information on the proposed mining and commence preparation of their Property Subsidence Management Plan.

If you have any questions regarding current or proposed mining, an Approvals Coordinator can be contacted by phone on 02 4973 0948 or by email at mandalong.approvals@centennialcoal.com.au.



**Mandalong Mine
Workings and
Surface Features**



UPDATE ON THE MANDALONG SOUTH SURFACE SITE



Ventilation fans and attached silencers 1 and 2 at Mandalong South Surface Site

Since the last Mandalong Newsletter update, notable progress has occurred at the Mandalong South Surface Site (MSSS) throughout 2022 and 2023. Specifically, Centennial has completed the construction of three additional ventilation structures, placed upon a raise bore shaft to optimise the inflow of fresh air into the southern sector of the mine. This significant enhancement has greatly improved our overall ventilation system.

Additionally, an ongoing project is actively working on installing advanced noise reduction mechanisms for these three ventilation fans. This project is focused on achieving a substantial decrease in noise emissions. We have successfully replaced the outlet silencers for fans 1 and 2, with the installation of fan 3 expected to be completed by mid-October 2023. These initiatives will establish a quieter atmosphere for the residents near MSSS, reducing potential disturbances.



**Mandalong South Surface Site
(September 2023)**

Furthermore, around the MSSS, we're currently involved in a comprehensive initiative to plant native trees. This endeavor is designed to enrich the ecological landscape and promote sustainable practices in the region.

In 2022, MSSS also completed the drilling of a service borehole, establishing a crucial conduit for essential resources like electricity, water, concrete and ballast. This project has significantly improved the availability and accessibility of these vital provisions, ensuring the sustainability of operations in the southern section of the mine.

EXPLORING THE EASTERN DOMAIN: CENTENNIAL'S EXPANSION



In a new development, Centennial is expanding its mining operations into the eastern section of our lease, encompassing Longwalls 39–60.

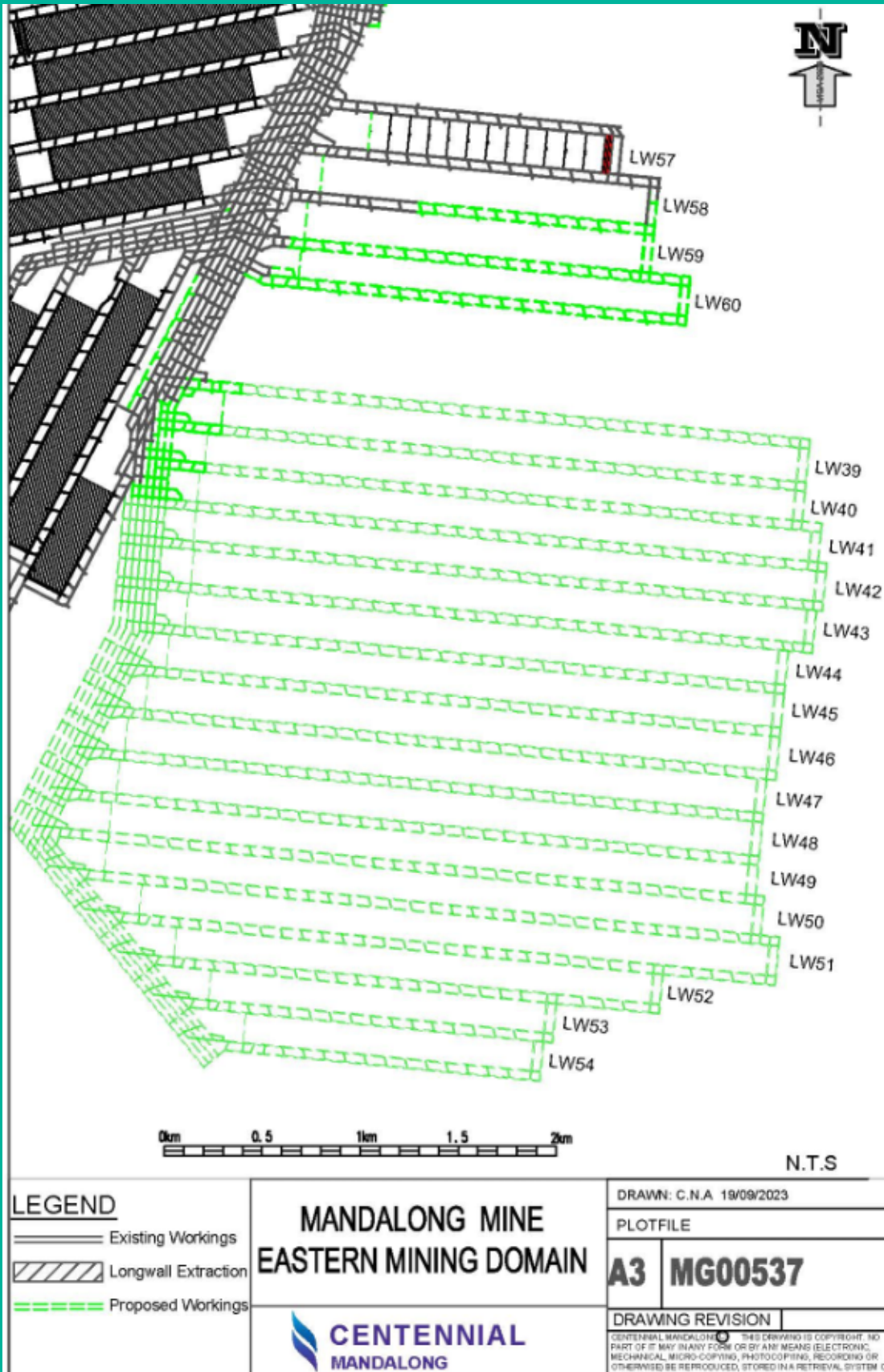
The first of several extraction plans was approved in April 2023 for Longwalls 57–60. A decision was made to prioritise the mining of Longwalls 57 and 58, driven by geological factors.

For Longwalls 57–58, comprehensive baseline assessments were conducted before mining, and we will continue to monitor periodically during and after mining operations to ensure strict adherence to our consent conditions and extraction plan approval, promoting both environmental responsibility and subsidence impact management.

Beyond Longwalls 57–58, our lease includes several additional Longwalls, with mining operations scheduled to commence in Longwall 39 in mid-2025. Presently, the extraction approval for Longwalls 39–43 is in the planning phase, and we are diligently conducting thorough baseline environmental and subsidence assessments on privately and publicly owned assets. These assessments encompass surveys of flora, fauna, flooding, subsidence, built features, land management, public safety and cultural heritage. These assessments are mandated by the Department of Planning and Environment to ensure ongoing compliance before and after mining operations commence. This approach enables us to cultivate a comprehensive understanding of the pre-mining environment and ensures that mining impacts align with Extraction Plan Approval, Consent Conditions and the Environmental Impact Statement (EIS).

EXPLORING THE EASTERN DOMAIN: CENTENNIAL'S EXPANSION

Mandalong Mine
Eastern Mining
Domain



COMMENCEMENT OF PSMP INTO THE EASTERN DOMAIN

Planning is currently underway at Centennial Mandalong to develop Longwalls 39–43. Consequently, a new Extraction Plan is being prepared as required by the mine's Development Consent (SSD-5144).

The mine operates under several conditions attached to the Development Consent. Centennial Mandalong Consent Schedule 4, Condition 6 requires that a Property Subsidence Management Plan (PSMP) be prepared for each private property title to be affected by subsidence for which an Extraction Plan is being prepared.

We have delivered a comprehensive Resident Information Pack to landholders within the project area. Its purpose is to provide essential knowledge about the mining process and insights into Centennial, as well as the impact of subsidence in the context of longwall mining. These resources will assist in understanding the Property Subsidence Management Plan (PSMP).

The process for developing PSMPs for impacted properties began in August 2023, and we aim to complete and finalise it by December 2023. The initial consultation process is expected to involve a face-to-face meeting to discuss the PSMP process. Consultation is ongoing, and a PSMP should be regarded as a living document. The PSMP will be subject to change just as mine plans and, hence, subsidence predictions change.

Table 1 outlines the steps and timeframe for developing the PSMP, while Table 2 provides a general overview of the pre-mining planning, application and approval process.

Landholder PSMP Communications and Consultation Timetable

Step	Action	Approximate Timing
1	Preliminary communication and consultation for identification of issues to be addressed in PSMP and arrangements to collect background information (such as detailed property survey and land use studies)	Ongoing
2	Draft PSMP issued for discussion	September–October 2023
3	Revision of PSMP to address landowner issues	October 2023
4	Review of PSMP to ensure consistency with Centennial Mandalong Environmental Strategy and Subsidence Management Systems	November 2023
5	PSMP finalised	November 2023

Mine Planning, Application and Approval Process

Step	Action	Approximate Timing
1	Subsidence modelling and assessment	Ongoing
2	Notification regarding intention to submit an Extraction Plan application to DPE	Ongoing
3	Development of PSMP commences	Ongoing
4	Risk assessments undertaken	October 2023
5	Finalisation of PSMP with landholder	December 2023
7	Extraction application lodged with DPE	January 2025
8	Determination of Extraction Plan application (DPE)	June 2025
9	Longwall 39-43 to commence extraction, subject to relevant approvals being obtained	May 2025

EXPLORATION UPDATE

Centennial Mandalong is finalising the Extraction Plan for Longwalls 39-43. It is expected that mining will commence in Longwall 39 in May 2025. To complete the Extraction Plan, a range of due diligence studies are underway. These include flora and fauna surveys, Aboriginal and European cultural heritage, and Property Subsidence Management Plans (PSMP). These surveys add to the existing data set and will continue after mining has been completed.

In securing the mining approval, exploration drilling was also undertaken to understand the overlying strata characteristics, coal seam depth and thickness, and coal quality. This information is used to determine the final mine plan (including longwall widths and locations). Exploration drilling continues throughout mining operations to establish more information about the coal resource, particularly focusing on the location of faults, igneous sills and dykes (volcanic activity), and to install monitoring equipment.

EXPLORATION UPDATE

Exploration drilling has been ongoing throughout 2023. The 2024 exploration program is now finalised and landholders will be contacted over the coming weeks to discuss the program and seek access to properties. The area where the exploration drilling will be focusing is the eastern mining domain (Longwall 39 progressing south).

Exploration is also undertaken using other methods such as aero and ground magnetic surveys. The objective of magnetic surveys is to assist with the identification and mapping of strongly magnetised igneous intrusions within the mining area. The results from the survey are used to better understand regional geological settings, as they relate to barriers to mining, specifically the presence of igneous dykes. Ground magnetic surveys involve an operator walking over an area with data logger collating information. A ground magnetic survey for the eastern domain will also be undertaken from 2024.



Example of ground water monitor

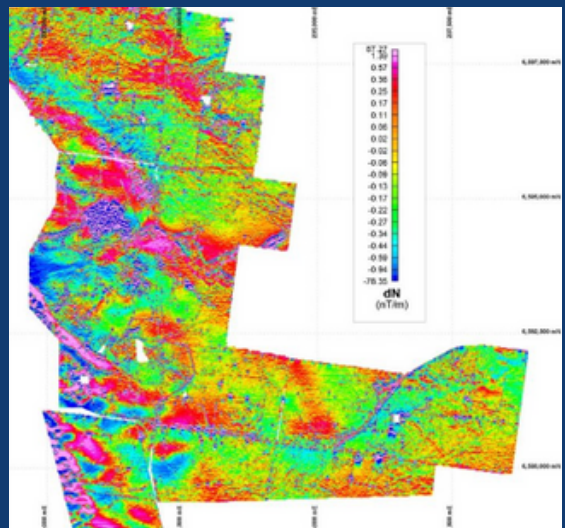


Example of surface to seam exploration drill rig



Data collection

Map of data collected from ground magnetic survey



We're committed to sustainability

In 2022 we managed 912 hectares of land for biodiversity

SPONSORSHIP OPPORTUNITY

Centennial is committed to making a meaningful difference in our local areas. We currently have sponsorship opportunities available through the Mandalong Mine Community Fund.

The Mandalong Mine Community Fund grants up to \$50,000 per annum to support community projects and initiatives that directly benefit residents in the Cooranbong, Dora Creek, Mandalong, Morisset and Wyee areas. Already this fund has made contributions towards the Wyee Point Piranhas Swim Club, the Avondale School Musical Department, the Meals on Wheels Wellness Club and the Morisset United Soccer Club.

To propose an idea for a community project, please visit Centennial's website to access the application form. The application period concludes on Friday 13 October 2023.



Morisset United Soccer Club



We're committed to community

In 2022 we contributed around \$400 million to local economies

COMMUNITY CONSULTATIVE COMMITTEE

The Mandalong Community Consultative Committee (CCC) meets three times per year at the Mandalong Mine. Meetings are overseen by an independent chairperson appointed by the (DPIE). There are six community representatives from the Mandalong, Mandalong South and Dora Creek communities, who are appointed to the CCC. Some of the information reported at the CCC meetings includes:

- Progress at the mine (operational issues).
- Monitoring and environmental performance.
- Community complaints and the response to complaints.
- Project updates.

The minutes and presentations from the CCC meetings are available on Centennial's website.

FURTHER INFORMATION

For further information and updates, please visit the Centennial Mandalong website at <https://www.centennialcoal.com.au/operations/mandalong>. This website serves as a resource to access the latest details about Centennial operations at the Mandalong Mine. By visiting the website, you can explore information about the mine, including environmental initiatives and community engagement efforts.

Additionally, the website provides updates and contact information for any specific inquiries you may have.

Stay informed by regularly visiting the Centennial Mandalong website for the most up-to-date information regarding Centennial Mandalong operations.

WORK WITH US



Careers | Employment Opportunities

visit: centennialcoal.com.au/careers

email: HR@centennialcoal.com.au