



EPBC 2013/7606
Annual Compliance Report

Airly Mine

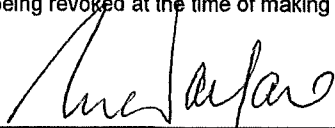
August 2018

This page has been intentionally left blank.

Declaration of Accuracy

In making this declaration, I am aware that Section 490 and 491 of the Environment Protection and Biodiversity Conservation Act 1999 (Cth) (EPBC Act) make it an offence in certain circumstances to knowingly provide false or misleading information or documents. The offence is punishable on conviction by imprisonment or a fine, or both. I declare that all the information and documentation supporting this compliance report is true and correct in every particular. I am authorised to bind the approval holder to this declaration and that I have no knowledge of that authorisation being revoked at the time of making this declaration.

Signed



Full name (please print)

DENNIS WALLACE

Position (please print)

MINE MANAGER

Organisation (please print including ABN/ACN if applicable)

CENTENNIAL AIRLY PTY LTD. ACN = 078 693 722

Date

20, 8, 2018

DOCUMENT OWNER AND ORIGINATOR:

Sam Price

Airly Mine Environment and Community Coordinator

APPROVED BY:

Paul Williams

Group Manager Environment

Signature:



Date:

20/8/18.

Date	Revision Status	Distribution
17/08/2018	V1 – Submission to DoE	DoE, Centennial Airly Website

This page has been intentionally left blank.

TABLE OF CONTENTS

1. INTRODUCTION.....	7
2. DESCRIPTION OF ACTIVITIES.....	10
2.1. Project Details	10
2.2. Approvals	11
2.3. Operational Summary	12
3. DETAILS OF COMPLIANCE WITH APPROVAL CONDITIONS	14
4. IMPLEMENTATION OF MANAGEMENT DOCUMENTS	39
5. TRIGGER NOTIFICATIONS.....	42

FIGURES

Figure 1 Regional Context.....	10
Figure 2 Project Application Area (Controlled Action Area EPBC2013/7606).....	10

TABLES

Table 1 EPBC2013/7606 Project Details.....	10
Table 2 Airly Mine major Approvals.....	10
Table 3 SSD_5581 Modifications during the Reporting period.....	11
Table 4 Airly Mine - Production Summary.....	12
Table 5 Airly Mine - Operations Summary.....	12
Table 6 EPBC2013/7606 Condition Compliance Status.....	15
Table 7 EPBC 2013/7606 Condition 1 – NSW Development Consent SSD_5581 Conditions.....	19
Table 8 Management Plans Required Under EPBC 2013/7606 – Approval Status.....	28

APPENDICES

Appendix 1 Airly Mine 2018 Independent Environmental Audit Report
--

This page has been intentionally left blank.

1. INTRODUCTION

Airly Mine is an underground coal mine located in the Western Coalfields, within the Sydney Basin, approximately 40 kilometers (km) north-northwest of Lithgow and approximately 171 km northwest of Sydney (Figure 1). The Mine's consent allows extraction of 1.8 million tonnes of coal per annum for supply to both domestic and international markets by rail. Centennial Airly Pty Limited (Centennial Airly) is the operator of Airly Mine and is a wholly owned subsidiary of Centennial Coal Company Pty Limited.

The Airly Mine Extension Project (SSD_5581) was approved in December 2016 and allows mining operations for a period of 20 years within the Project Area (Figure 2). Airly commenced operations under SSD_5581 on 31 January 2017.

Coal mining to date at Airly Mine has been bord and pillar mining within the Lithgow Seam. Airly Mine moved to a care and maintenance phase in January 2013 and remained in care and maintenance until March 2014. During this phase extraction activities ceased, however environmental management of the mine was ongoing including ongoing environmental monitoring. Coal production at Airly Mine resumed in March 2014.

The Mine's disturbance footprint is limited to the pit top and surface infrastructure areas including water management systems, car park, administration building, workshop, conveyors, coal handling plant and mine ventilation infrastructure. The current disturbance footprint of Airly Mine is 48.2 Ha.

Airly Mine does not require any offset areas.

This report has been prepared in accordance with the Annual Compliance Report Guidelines (Department of Environment, 2014) to address the requirement of EPBC 2013/7607 Condition 4, which state that:

*Within three (3) months of every twelve (12) month anniversary of the **commencement of the action**, the person taking the action must publish a report on their website addressing compliance with each of the conditions of this approval, including implementation of any management plans as specified in the conditions. Documentary evidence providing proof of the date of publication and non-compliance with any of the conditions of this approval must be provided to **the Department** at the same time as the compliance report is published.*

The reporting period for this Annual Compliance Report is from the 20th May 2017 to the 19th May 2018.

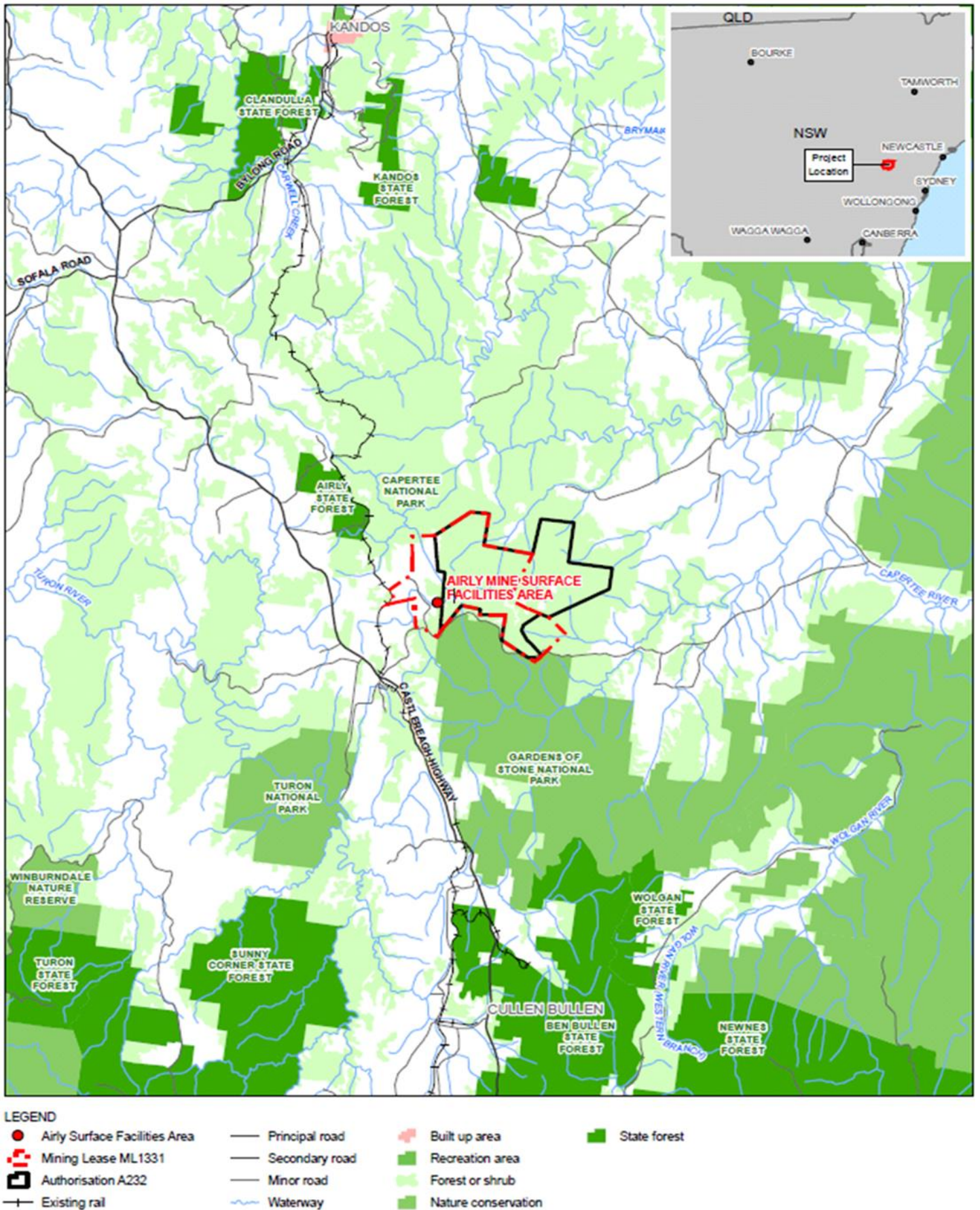


Figure 1. Regional Context

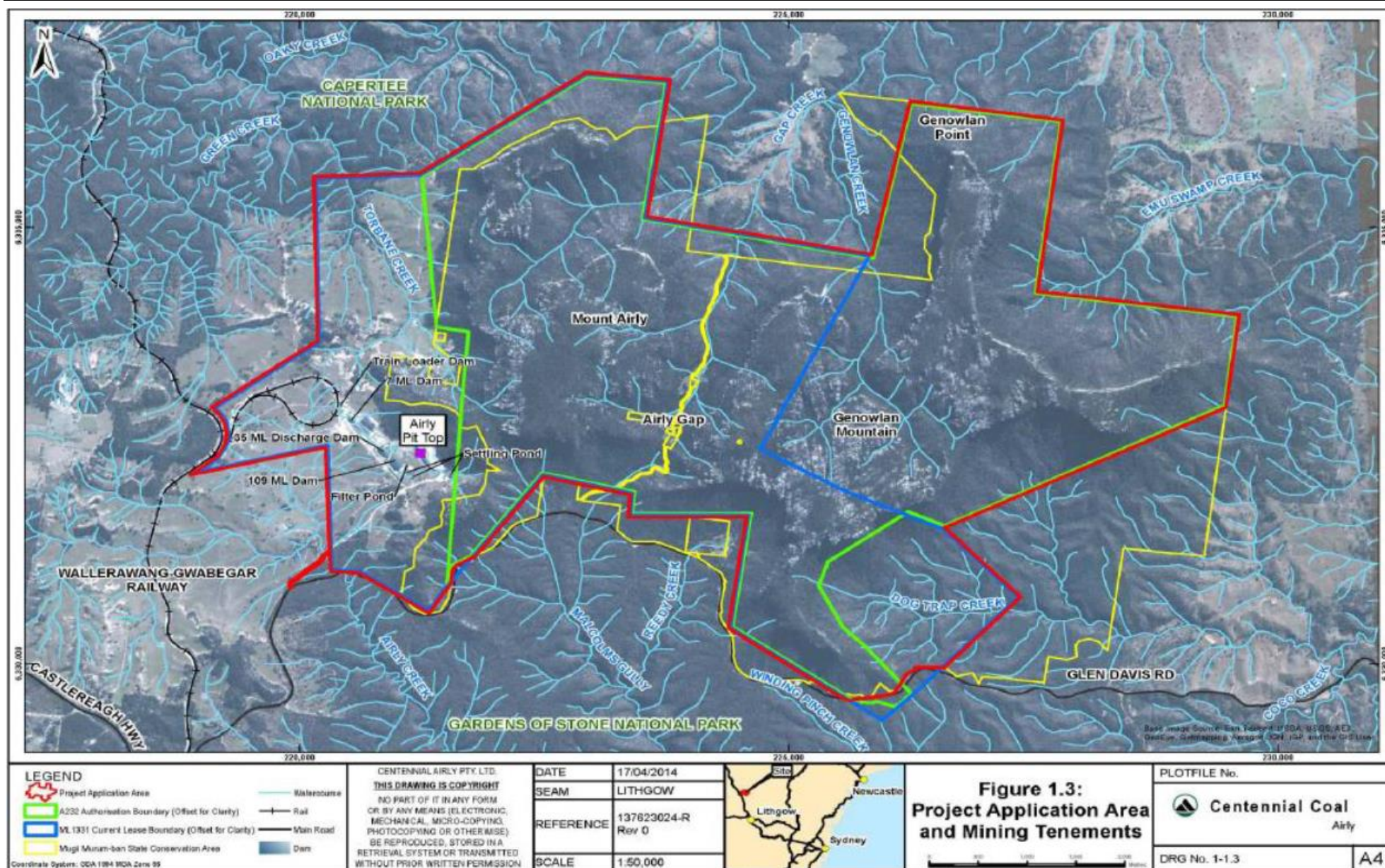


Figure 2. Project Application Area and Mining Tenements (Controlled Action Area – EPBC 2013/7606)

2. DESCRIPTION OF ACTIVITIES

2.1. Project Details

An overview of EPBC 2013/7076 project details, as per Annual Compliance Report Guidelines (Department of Environment, 2014) is outlined in Table 1.

Table 1. EPBC 2013/7606 Project Details

EPBC Number	EPBC 2013 / 7606
Project Name	Airly Mine Extension Project
Approval Holder	Centennial Airly Pty Ltd ACN 078 639 722
Approved Action	To expand underground mining operations at the existing Airly Mine.
Location of the Project	Airly Mine is approximately 40 km north-west of Lithgow, near Capertee NSW. Refer to Figure 1 for regional context and Figure 2 for controlled action area.
Date of EPBC 2013/7606 Approval	18 th May 2017
Date of Commencement of the action	20 th May 2017
Reporting Period	20 th May 2017 to 19 th May 2018
Date of Report	17 th August 2018

2.2. Approvals

Airly Mine operates under NSW Development Consent SSD_5581, EPBC Approval 2013/7606, EPL12374, ML1331, and A232. Details of these are provided in Table 2. During the reporting period there have been no approved modifications the Airly Mine Development Consent (Table 3).

Table 2. Airly Mine Major Approvals

Approval	Details	Date of Issue	Expiry
Development Consent SSD_5581	Airly Mine Extension Project - Underground mine development to extract up to 1.8 million tonnes per annum.	15 December 2016	31 January 2037
EPBC Approval (EPBC 2013/7606)	Permission to carry out mining operations in accordance with SSD_5581 with conditions relating to the protection of matters of national environmental significance.	18 May 2017	31 March 2047
Environmental Protection Licence 12374 (EPL 12374)	3 Licensed Discharge Points Production of coal >500,000T to 2,000,000T per annum	12 December 2005	Renewed Annually
Mining Lease 1331 (ML1331)	Mining lease area of approximately 2,745 hectares	8 May 2014	20 October 2035
Authorisation 232 (A 232)	Exploration Area of approximately 3,054 hectares	21 May 2015	20 October 2019

Table 3. SSD_5581 Modifications during the Reporting Period

Modification No.	Details of Modification	Date of Application /Exhibition Period	Status (as at 19 May 2018)
N/A			

2.3. Operational Summary

The approval of SSD_5581 allows Airly Mine to continue underground coal mining operations within the Lithgow Seam until 31 January 2037, with subsequent rehabilitation and closure works. The operational summary for Airly Mine for the 2016 and 2017 calendar years as well as the 2018 production forecast is provided in Tables 4 and 5.

Table 4. Production Summary

Material	Approved Limit (and source)	Previous Reporting Period (Actual - 2016)	This Reporting Period (Actual - 2017)	Next Reporting Period (Forecast - 2018)
Waste Rock/ Overburden	N/A	Nil	Nil	Nil
ROM Coal	1.8 Million	842,768 (t)	872,174 (t)	891,807 (t)
Coarse reject	N/A	Nil	Nil	Nil
Fine reject (Tailings)	N/A	Nil	Nil	Nil
Saleable product	1.8 Million	842,768 (t)	872,174 (t)	891,807 (t)

Table 5. Operations Summary

Limits	Approved Limit (and source)	2016 Reporting Period (Actual)	2017 Reporting Period (Actual)	Comment (if applicable)
Hours of operation	24/7 (SSD_5581)	24/7	24/7	Compliant
Transport (rail)	Max of 5 Trains/day; Average of 2 Trains/day. (SSD_5581)	816,635 (t)	885,975 (t)	No exceedance of daily or annual limit
Transport (road)	No transport of coal by road. (SSD_5581)	Nil	Nil	All coal transported by rail
ROM Stockpile Size	200,000 T	Fluctuated throughout the	Fluctuated throughout the	Compliant.

	(Airly Mine Extension Project EIS, 2014)	year but always <200,000 T.	year but always <200,000 T. Airly Mine averages approximately 60,000 T on the stockpile throughout the year.	The stockpile design does not physically allow the storage of greater than 200,000 tonnes of coal.
Employee Numbers	Up to 135 personnel and up to 20 contractors (Airly Mine Extension Project EIS, 2014)	76 Personnel as of 31 Dec 2016.	89 Personnel as of 31 Dec 2017.	Compliant

3. DETAILS OF COMPLIANCE WITH APPROVAL CONDITIONS

Airly Mine's compliance status with EPBC 2013/7606 is outlined in Tables 6 and 7.

All conditions of EPBC 2013/7606, relating to the protection of matters of national environmental significance, reference select conditions of SSD_5581. During the reporting period, an Independent Environmental Audit (IEA) of the Development was under taken by MCW Environmental Consulting Pty Limited in accordance with SSD_5581. The 2018 IEA encompassed all components of Condition 1 of the EPBC 2013/7606 approval.

Therefore the 2018 IEA Report has been utilised to assess compliance with Condition 1 of EPBC 2013/7606. A copy of this report is attached as Appendix 1.

Table 6. EPBC 2013/7606 - Condition Compliance Status

Condition Number / Reference	Condition	Project Compliance Status	Evidence / Comments									
1	<p><i>Compliance with conditions of the New South Wales development consent:</i></p> <p>For the protection of <i>matters of national environmental significance</i>, the person taking action must comply with the following conditions of the <i>New South Wales development consent</i>.</p> <table><tr><th>Schedule</th><th>Condition</th><th>Subject</th></tr><tr><td>2</td><td>1</td><td>general obligation to prevent harm</td></tr><tr><td></td><td>2</td><td>requirement to undertake action generally in accordance with the</td></tr></table>	Schedule	Condition	Subject	2	1	general obligation to prevent harm		2	requirement to undertake action generally in accordance with the	Compliant	Refer to Table 7 for a full breakdown of Development Consent condition compliance.
Schedule	Condition	Subject										
2	1	general obligation to prevent harm										
	2	requirement to undertake action generally in accordance with the										

Condition Number / Reference	Condition			Project Compliance Status	Evidence / Comments
			EIS, mining schedule, independent expert panel advice and the NSW Development Consent		
	3	1	restrictions on mining in geologically sensitive areas		
		2	performance measures for the protection of identified commonwealth natural and heritage features		
		7	preparation, approval and implementation of extraction plans, incorporating a range of relevant management sub-plans		
	4	11	requirement to ensure sufficient water supply for all stages of development otherwise adjust scale of operations to match supply		
		13	requirement for compensatory water supply (as required)		
		14	performance measures for water management		
		15	preparation, approval and implementation of a water management plan		

Condition Number / Reference	Condition			Project Compliance Status	Evidence / Comments
		16	independent expert review of groundwater management plan		
		17	preparation, approval and implementation of a biodiversity management plan		
		20	protection of Aboriginal heritage		
		21	preparation, approval and implementation of a heritage management plan		
		29 (e)	closure monitoring and management planning for groundwater		
2	Within fourteen (14) days after the commencement of the action , the person taking the action must advise the Department in writing of the actual date of commencement of the action .			Compliant	Letter sent to the Department on 29 May 2017 advising that the date for commencement of action for the Airly Mine Extension Project was 20 May 2017.
3	The person taking the action must maintain accurate records substantiating all activities associated with or relevant to the conditions of approval, and make them available upon the request of the Department . Such records may be subject to audit by the Department or an independent auditor in accordance with Section 458 of the EPBC Act , or used to verify compliance with the conditions of approval. Summaries of audits will be posted on the Department's website. The results of audits may also be publicised through the general			Compliant	Airly Mine maintains accurate records for all activities associated with relevant conditions of EPBC 2013/7606. There were no audits or requests from the Department of Environment during the reporting period.

Condition Number / Reference	Condition	Project Compliance Status	Evidence / Comments
	media.		
4	Within three (3) months of every twelve (12) month anniversary of the commencement of the action , the person taking the action must publish a report on their website addressing compliance with each of the conditions of this approval, including implementation of any management plans as specified in the conditions. Documentary evidence providing proof of the date of publication and non-compliances with any of the conditions of this approval must be provided to the Department at the same time as the compliance report is published.	Compliant	<p>This condition is addressed by this report.</p> <p>The anniversary of the commencement of the action is 20th May. The Airly Mine EPBC Compliance report for the period 20th May 2017 to 19th May 2018 was submitted to the Department of Environment as well as published on the Centennial Airly website on 20 August 2018.</p> <p>There were no non-compliances with EPBC 2013/7606 during the reporting period.</p>
5	Upon the direction of the Minister , the person taking the action must ensure that an independent audit of compliance with the conditions of approval is conducted and a report submitted to the Minister . The independent auditor must be approved by the Minister prior to the commencement of the audit. Audit criteria must be agreed to by the Minister and the audit report must address the criteria to the satisfaction of the Minister .	Compliant – Not Triggered	<p>There has been no request from the Minister to conduct an independent audit against the conditions of the EPBC Approval 2013/7606.</p> <p>This condition has therefore been assessed as not triggered.</p>
6	If, at any time after two (2) years from the date of this approval, the person taking the action has not commenced the action , then the person taking the action must not commence the action without the written agreement of the Minister .	Not Applicable	As per letter to the Department of Environment on 29 th May 2017, Airly Mine commenced the action on 20 th May 2017.

Condition Number / Reference	Condition	Project Compliance Status	Evidence / Comments
7	Unless otherwise agreed to in writing by the Minister , the person taking the action must publish all management document referred to in these conditions of approval on their website. This includes documents required indirectly through the New South Wales development consent . Each document must be published on the website within one (1) month of being approved by the Minister .	Compliant	<p>The EPBC 2013/7606 conditions of approval do not require any specific management plans but rather refer to management plans required under Development Consent SSD_5581.</p> <p>All management plans that have been approved by the Department of Planning and Environment have been published on the Centennial Airly website within one month of their approval.</p> <p>See Section 4 of this report.</p>

Table 7. EPBC Condition 1 – NSW Development Consent SSD_5581 Conditions

Condition Number / Reference	Condition of SSD_5581	Project Compliance Status	Evidence / Comments
Schedule 2 Condition 1	<p>OBLIGATION TO MINIMISE HARM TO THE ENVIRONMENT</p> <p>In addition to meeting the specific performance measures and criteria established under this consent, the Applicant must implement all reasonable and feasible measures to prevent and/or minimise any harm to the environment that may result from the construction, operation, or rehabilitation of the development.</p>	Compliant	Based on the findings of the 2018 IEA Report (Appendix 1), it was considered that Airly have implemented reasonable and feasible measures to prevent and/or minimise any harm to the environment.
Schedule 2 Condition 2	<p>TERMS OF THE CONSENT</p> <p>The Applicant must carry out the development</p> <p>(a) generally in accordance with the EIS and the Mining schedule (see Figure 3 in Appendix 2); and</p> <p>(b) in accordance with the IPRP's Report and the conditions of this consent.</p> <p>Note: The layout of the development is shown in Appendices 2, 3 and 10 of SSD_5581.</p>	Compliant	Based on the findings of the 2018 IEA Report (Appendix 1) and subsequent correspondence with the Department of Planning and Environment, Airly Mine was compliant with this condition during the reporting period.
Schedule 3 Condition 1	<p>Restrictions on Mining</p> <p>The Applicant must not:</p> <p>(a) carry out any second workings in the Panel and Pillar Zone or the Partial Pillar Extraction Zone that are within an angle of draw 26.5 degrees of the Cliff Line Zone and Zone of First Workings before it has completed mining in at least four adjacent extraction panels in the Panel and Pillar Zone beneath Mt Airly; or</p> <p>(b) carry out any second workings within an angle of draw 26.5 degrees plus 50 metres from the New Hartley Shale Mine Potential Interaction Zone.</p> <p><i>Note: For more detail on the zones referred to in this condition, see the Figure 2 in Appendix 3 of SSD_5581.</i></p>	Compliant – Not Triggered	Based on the findings of the 2018 IEA Report (Appendix 1) and subsequent correspondence with the Department of Planning and Environment, Airly Mine was compliant with this condition during the reporting period.
Schedule 3 Condition 2	<p>Performance Measures – Natural and Heritage Features, etc</p> <p>The Applicant must ensure that the development does not cause any exceedances of the performance measures in Table 1 to the satisfaction of the Secretary.</p>	Compliant	Refer to Appendix A within the attached 2018 IEA Report (Appendix 1).

Condition Number / Reference	Condition of SSD_5581	Project Compliance Status	Evidence / Comments												
	Table 1: Subsidence Impact Performance Measures –Natural and Heritage Features, etc														
	<table><tr><th>Water Resources</th><th>Performance Measure</th></tr><tr><td>Gap and Genowlan Creeks</td><td><ul style="list-style-type: none">• Wherever depth of cover is < 40 m, no first or second workings within 20 m of the edge of the creek bed, measured horizontally in the seam• Negligible environmental consequences to water quality and to bed and bank stability• No greater environmental consequences than predicted in the EIS to water flows (including base flow)</td></tr><tr><td>All other watercourses</td><td>No greater subsidence impacts or environmental consequences than predicted in the EIS</td></tr><tr><td colspan="2">Land</td></tr><tr><td>The Grotto</td><td>Negligible subsidence impacts or environmental consequences</td></tr><tr><td>Cliffs within a 26.5 degree angle of draw of the Airly underground mine workings</td><td>No greater subsidence impacts or environmental consequences than predicted in the EIS (i.e. occasional rock falls, displacement or dislodgment of boulders or slabs of less than 30 m3, or fracturing, that do not impact Aboriginal heritage, EECs or public safety), that in total do not impact more than 2% of the total area of such cliffs</td></tr></table>		Water Resources	Performance Measure	Gap and Genowlan Creeks	<ul style="list-style-type: none">• Wherever depth of cover is < 40 m, no first or second workings within 20 m of the edge of the creek bed, measured horizontally in the seam• Negligible environmental consequences to water quality and to bed and bank stability• No greater environmental consequences than predicted in the EIS to water flows (including base flow)	All other watercourses	No greater subsidence impacts or environmental consequences than predicted in the EIS	Land		The Grotto	Negligible subsidence impacts or environmental consequences	Cliffs within a 26.5 degree angle of draw of the Airly underground mine workings	No greater subsidence impacts or environmental consequences than predicted in the EIS (i.e. occasional rock falls, displacement or dislodgment of boulders or slabs of less than 30 m3, or fracturing, that do not impact Aboriginal heritage, EECs or public safety), that in total do not impact more than 2% of the total area of such cliffs	
	Water Resources	Performance Measure													
	Gap and Genowlan Creeks	<ul style="list-style-type: none">• Wherever depth of cover is < 40 m, no first or second workings within 20 m of the edge of the creek bed, measured horizontally in the seam• Negligible environmental consequences to water quality and to bed and bank stability• No greater environmental consequences than predicted in the EIS to water flows (including base flow)													
	All other watercourses	No greater subsidence impacts or environmental consequences than predicted in the EIS													
	Land														
	The Grotto	Negligible subsidence impacts or environmental consequences													
Cliffs within a 26.5 degree angle of draw of the Airly underground mine workings	No greater subsidence impacts or environmental consequences than predicted in the EIS (i.e. occasional rock falls, displacement or dislodgment of boulders or slabs of less than 30 m3, or fracturing, that do not impact Aboriginal heritage, EECs or public safety), that in total do not impact more than 2% of the total area of such cliffs														

Condition Number / Reference	Condition of SSD_5581	Project Compliance Status	Evidence / Comments
	<p>Pagodas within a 26.5 degree angle of draw of the Airly underground mine workings (other than pagodas affected by the New Hartley interaction zone)</p>		
	<p>Pagodas within a 26.5 degree angle of draw of the New Hartley interaction zone</p>		
	<p>Minor cliffs</p>		
	<p>Steep slopes</p>		
	<p>All other land not covered by a performance measure above</p>		
	<p>Biodiversity</p>		
	<p>Threatened species, threatened populations, EECs and groundwater dependent ecosystems (with the exception of those listed below)</p>		

Condition Number / Reference	Condition of SSD_5581	Project Compliance Status	Evidence / Comments
	Pultenaea sp Genowlan Point population and Genowlan Point Allocasurina nana Heathland community		
	Heritage sites		
	Aboriginal heritage sites identified in Appendix 5		
	Non-Aboriginal heritage sites identified in Appendix 6		
	Mine workings		
	First workings beneath any feature where performance measures in this table require no or negligible environmental consequences and to all first workings beneath cliffs		
	Second workings		

Condition Number / Reference	Condition of SSD_5581	Project Compliance Status	Evidence / Comments
<p>Schedule 3</p> <p>Condition 7</p>	<p>Extraction Plan</p> <p>Prior to carrying out any first workings within the Cliff Line Zone and Zone of First Workings (refer to Figure 2 in Appendix 3) or second workings, the Applicant must prepare an Extraction Plan for the relevant workings to the satisfaction of the Secretary. Each Extraction Plan must:</p> <ul style="list-style-type: none"> (a) be prepared by suitably qualified and experienced persons whose appointment has been endorsed by the Secretary; (b) provide a detailed justification for any proposed divergence from the advice of the IEP or DRE; (c) include detailed plans of existing and proposed first and second workings and overlying surface features, including the identification of appropriate setback distances between cliffs, steep slopes and pagodas and second workings and any applicable adaptive management measures; (d) include adequate consideration of mine roof and floor conditions, pillar width to height ratio, final pillar design dimensions and the long-term stability of pillars, following consultation with the IEP; (e) give express consideration to the design parameters underpinning the advice in the IPRP's report, and if the proposed mine layout diverges from these parameters, provide a detailed justification for the proposed divergence, following consultation with the IEP; (f) provide an assessment of the likely stability of cliff lines, pagodas and steep slopes, in consultation with the IEP; (g) provide revised predictions of the potential subsidence effects, subsidence impacts and environmental consequences of the proposed mining covered by the Extraction Plan, incorporating any relevant information obtained since this consent, in consultation with the IEP; (h) describe in detail the performance indicators and measures that would be implemented to ensure compliance with the performance measures in Tables 1 and 2, and manage or remediate any impacts and/or environmental consequences to meet the rehabilitation objectives in condition 31 of Schedule 4, following consultation with the IEP; (i) include a: <ul style="list-style-type: none"> i. Subsidence Monitoring Program which has been prepared in consultation with the IEP, DRE and OEH, to: <ul style="list-style-type: none"> • monitor the subsidence effects and subsidence effects of the development; • develop effective remote monitoring techniques for the 	Compliant	Refer to Appendix A within the attached 2018 IEA Report (Appendix 1).

Condition Number / Reference	Condition of SSD_5581	Project Compliance Status	Evidence / Comments
	<p>development;;</p> <ul style="list-style-type: none"> • monitor pillar loads underground to develop an understanding of the loading conditions on pillars in the vicinity of cliff lines, pagodas and steep slopes; • provide data to assist with the management of risks associated with subsidence; • validate the subsidence predictions; • analyse the relationship between the predicted and resulting subsidence effects and predicted and resulting impacts under the plan and any ensuing environmental consequences; and • inform the contingency plan and adaptive management process; <p>ii. Built Features Management Plan which has been prepared in consultation with DRE, to manage the potential subsidence impacts of the proposed underground workings on built features, and which:</p> <ul style="list-style-type: none"> • has been prepared in consultation with the owner/s of potentially affected feature/s; • addresses in appropriate detail all items of key public infrastructure and other public infrastructure and all classes of other built features; • recommends appropriate pre-mining mitigation measures to reduce subsidence impacts; and • recommends appropriate remedial measures and includes commitments to mitigate, repair, replace or compensate predicted impacts on potentially affected built features in a timely manner; <p>iii. Water Management Plan which has been prepared in consultation with OEH and DPI Water, which provides for the management of potential impacts and/or environmental consequences of the proposed underground workings on watercourses and aquifers, including:</p> <ul style="list-style-type: none"> • detailed baseline data on: <ul style="list-style-type: none"> - surface water flows and quality in Gap and 		

Condition Number / Reference	Condition of SSD_5581	Project Compliance Status	Evidence / Comments
	<p>Genowlan Creeks; - surface water flows in Airly village spring and the Grotto; - groundwater levels, yield and quality in the region;</p> <ul style="list-style-type: none"> • surface and groundwater impact assessment criteria, including trigger levels for investigating any potentially adverse impacts on water resources or water quality; • a surface water monitoring program to monitor and report on: <ul style="list-style-type: none"> - stream flows and quality; - stream and riparian vegetation health; - channel and bank stability; • a groundwater monitoring program to monitor and report on: <ul style="list-style-type: none"> - springs, their discharge quantity and quality, as well as any associated groundwater dependent ecosystems; - groundwater inflows to the underground mining operations; - the height of groundwater depressurization; - background changes in groundwater yield/quality against mine - Induced changes, in particular, on groundwater bore users; - permeability, hydraulic gradient, flow direction and connectivity of the deep and shallow groundwater aquifers; • a description of any adaptive management practices implemented to guide future mining activities in the event of greater than predicted impacts on aquatic habitat; • a program to validate the surface water and groundwater models for the development, and compare monitoring results with modelled predictions; and • a plan to respond to any exceedances of the surface water and groundwater assessment criteria. <p>iv. Biodiversity Management Plan which has been prepared in consultation with DoE and OEH, which provides for the management of potential impacts and/or environmental consequences of the proposed first and second workings on aquatic and terrestrial flora and fauna, with a specific focus on</p>		

Condition Number / Reference	Condition of SSD_5581	Project Compliance Status	Evidence / Comments
	<p>threatened species populations and their habitats, endangered ecological communities and groundwater dependent ecosystems including, but not limited to:</p> <ul style="list-style-type: none"> • Pultenaea sp. Genowlan Point; • Genowlan Point Allocasuarina nanaHeathland; • Prostanthera stricta (Mount Vincent Mint-bush); and • Eucalyptus cannonii (Capertee Stringybark); <p>v. Land Management Plan which has been prepared in consultation with the IEP, DRE, OEH and any affected public authorities, to manage the potential impacts and/or environmental consequences of the proposed underground workings on land in general, with a specific focus on cliffs, pagoda formations, steep slopes and gorges;</p> <p>vi. Heritage Management Plan which has been prepared in consultation with OEH and relevant Aboriginal stakeholders, to manage the potential environmental consequences of the proposed workings on Aboriginal and historic heritage and includes all requirements under condition 23 of Schedule 4;</p> <p>vii. Public Safety Management Plan which has been prepared in consultation with the IEP, DRE and OEH to ensure public safety and manage access on the site;</p> <p>viii. include Trigger Action Response Plans, or equivalent, to prevent greater than predicted subsidence impacts and environmental consequences that may result from mining subsidence;</p> <p>ix. include a contingency plan that expressly provides for adaptive management where monitoring indicates that there has been an exceedance of any performance measure in Tables 1 and 2, or where any such exceedance appears likely;</p> <p>x. proposes appropriate revisions to the Rehabilitation Management Plan required under condition 33 in Schedule 4; and</p> <p>xi. include a program to collect sufficient baseline data for future Extraction Plans</p>		

Condition Number / Reference	Condition of SSD_5581	Project Compliance Status	Evidence / Comments
	<p>The Applicant must implement the approved Extraction Plan for the development.</p> <p>Notes:</p> <ul style="list-style-type: none"> <i>This condition does not apply to first or second workings which are covered by an Extraction Plan or Subsidence Management Plan approved, or under assessment as at the date of this development consent.</i> <i>In accordance with condition 4 in Schedule, the preparation and implementation of Extraction Plans may be staged, with each plan covering a defined area of underground workings. In addition, these plans are only required to contain management plans that are relevant to the specific underground workings that are being carried out.</i> <i>Due to the sensitive and rugged terrain of the Mugii Murumban State Conservation Area, the Applicant may propose remote subsidence monitoring techniques.</i> 		
<p>Schedule 4</p> <p>Condition 11</p>	<p>Water Supply</p> <p>The Applicant must ensure that it has sufficient water for all stages of the development, and if necessary, adjust the scale of operations on site to match its available water supply.</p> <p>Note: Under the Water Act 1912 and/or the Water Management Act 2000, the Applicant is required to obtain the necessary water licences for the development.</p>	Compliant	<p>Airly Mine reviews and updates the site water balance on a regular basis to ensure that the project has sufficient water for all stages of the development.</p> <p>Refer to Appendix A within the attached 2018 IEA Report (Appendix 1).</p>
<p>Schedule 4</p> <p>Condition 13</p>	<p>Compensatory Water Supply</p> <p>The Applicant must provide a compensatory water supply to the owner of any privately-owned land whose water supply is adversely and directly impacted (other than a negligible impact) as a result of the development, in consultation with DPI Water, and to the satisfaction of the Secretary.</p> <p>The compensatory water supply measures must provide an alternative long-term</p>	Compliant	<p>Not triggered. There have been no impacts to any privately owned ground or surface water supplies.</p>

Condition Number / Reference	Condition of SSD_5581	Project Compliance Status	Evidence / Comments						
	<p>supply of water that is equivalent, in quality and volume,to the loss attributed to the development. Equivalent water supply should be provided (at least on an interim basis) within 24 hours of the loss being identified.</p> <p>If the Applicant and the landowner cannot agree on the measures to be implemented, or there is a dispute about the implementation of these measures, then either party may refer the matter to the Secretary for resolution. If the Applicant is unable to provide an alternative long-term supply of water, then the Applicant must provide alternative compensation to the satisfaction of the Secretary.</p>								
Schedule 4 Condition 14	<p>Water Management Performance Measures</p> <p>The Applicant must comply with the performance measures in Table 6 to the satisfaction of the Secretary.</p> <p>Table 6: Water Management Performance Measures</p> <table><tr><th>Feature</th><th>Performance Measure</th></tr><tr><td>Water Management – General</td><td><ul style="list-style-type: none">Minimise the use of clean water on siteMinimise the use of the supplementary water supply from the production bore</td></tr><tr><td>Construction and operation of linear infrastructure</td><td><ul style="list-style-type: none">Design, install and maintain erosion and sediment controls generally in accordance with the series Managing Urban Stormwater: Soils and Construction including Volume 1, Volume 2A –Installation of Services and Volume 2C – Unsealed RoadsDesign, install and maintain infrastructure within 40 m of watercourses generally in accordance with the Guidelines for Controlled Activities on Waterfront Land (July 2012), or its latest versionDesign, install and maintain creek crossings generally in accordance with Policy and Guidelines for Fish Friendly Waterway Crossings</td></tr></table>	Feature	Performance Measure	Water Management – General	<ul style="list-style-type: none">Minimise the use of clean water on siteMinimise the use of the supplementary water supply from the production bore	Construction and operation of linear infrastructure	<ul style="list-style-type: none">Design, install and maintain erosion and sediment controls generally in accordance with the series Managing Urban Stormwater: Soils and Construction including Volume 1, Volume 2A –Installation of Services and Volume 2C – Unsealed RoadsDesign, install and maintain infrastructure within 40 m of watercourses generally in accordance with the Guidelines for Controlled Activities on Waterfront Land (July 2012), or its latest versionDesign, install and maintain creek crossings generally in accordance with Policy and Guidelines for Fish Friendly Waterway Crossings	Compliant	<p>Airly Mine is compliant with the performance measures of this condition.</p> <p>Water Management General:</p> <ul style="list-style-type: none">clean water runoff is captured via a series of diversion drains;Water saver shower heads and half flush toilets are utilised to minimise use of clean water;dust suppressant products are used on unsealed roads which reduces the volumes of water spraying required for dust control;production bore water is used as a supplementary water supply, only being utilised when other suitable water sources are insufficient;production bore water is initially directed to the 109ML Dirty Water Dam before being transferred via the 35ML Dam to process water header tanks. Airly Mine is investigating the possibility of pumping production bore water directly to the header tanks to avoid losses through evaporation.water usage is tracked during daily morning production meetings <p>Construction and operation of linear infrastructure:</p> <ul style="list-style-type: none">No new linear infrastructure was constructed during the audit period, hence these new performance measures were not triggered.
Feature	Performance Measure								
Water Management – General	<ul style="list-style-type: none">Minimise the use of clean water on siteMinimise the use of the supplementary water supply from the production bore								
Construction and operation of linear infrastructure	<ul style="list-style-type: none">Design, install and maintain erosion and sediment controls generally in accordance with the series Managing Urban Stormwater: Soils and Construction including Volume 1, Volume 2A –Installation of Services and Volume 2C – Unsealed RoadsDesign, install and maintain infrastructure within 40 m of watercourses generally in accordance with the Guidelines for Controlled Activities on Waterfront Land (July 2012), or its latest versionDesign, install and maintain creek crossings generally in accordance with Policy and Guidelines for Fish Friendly Waterway Crossings								

Condition Number / Reference	Condition of SSD_5581		Project Compliance Status	Evidence / Comments
		(NSW Fisheries 2003) and Why Do Fish Need to Cross the Road? Fish Passage Requirements for Waterway Crossings (NSW Fisheries 2003), or their latest versions		<ul style="list-style-type: none"> erosion and sediment controls of existing linear infrastructure include sumps, drains, sediment fences and rock check structures which are subject to inspection weekly and within 24 hours following a rainfall event. maintenance is conducted as required for all erosion and sediment controls on site. <p>Sediment dams:</p> <ul style="list-style-type: none"> No new sediment dams were constructed during the audit period; key existing sediment dams at Airly as part of the dirty water system are the 109ML Dirty Water Dam, 7ML Dam, Train Loader Dam and the Settling Pond; SEEC Basin Sizing Review shows that the capacities of the 109ML Dirty Water Dam, 7ML Dam and Train Loader Dam are well in excess of the Blue Book requirements; sediment dams are subject to inspection weekly and within 24 hours following a rainfall event. <p>Mine water storages:</p> <ul style="list-style-type: none"> No new water storages were constructed during the audit period; key existing water storages at Airly are the 109ML Dirty Water Dam, 35ML Discharge Dam, 7ML Dam, Train Loader Dam and the Settling Pond; SEEC Basin Sizing Review shows that the capacities of the 109ML Dirty Water Dam, 7ML Dam and Train Loader Dam are well in excess of the Blue Book requirements; water storages are subject to inspection weekly and within 24 hours following a rainfall event (a selection of completed inspection checklists were sighted). discharges to surface waters have been minimised. During the reporting period there was just one discharge event recorded which was for LDP3 in November 2017 following a high rainfall storm event. The event involved a relatively small volume of water discharged (1,200L). <p>Water discharge to Airly Creek:</p> <ul style="list-style-type: none"> with regard to Airly Creek the 2017 Annual Water Monitoring Report (appendix of 2017 Annual
	Sediment dams	<ul style="list-style-type: none"> Design, install and maintain the dams generally in accordance with the series Managing Urban Stormwater: Soils and Construction –Volume 1 and Volume 2E –Mines and Quarries 		
	Mine water storages	<ul style="list-style-type: none"> Design, install and maintain mine water storage infrastructure to ensure no unlicensed or uncontrolled discharge of mine water off-site Minimise discharges to surface waters as far as reasonable and practicable New on-site storages (including mine infrastructure dams, groundwater storage and treatment dams) are suitably treated to comply with a permeability standard of $< 1 \times 10^{-9}$ m/s Achieve an improvement in the quality of water held in the 35 ML dam generally in accordance with Figure 6-7 in Appendix F of the EIS (surface water impact assessment) over the life of the mine. 		
	Water discharge to Airly Creek	<ul style="list-style-type: none"> No greater impacts than predicted in the EIS for water flow and quality in Airly Creek between LDP 001 and Point 4 (refer Appendix 9) Negligible environmental consequences for water quality (ie. protection to 99% of all species in accordance with ANZECC guidelines) and flow in Airly Creek where it enters the Gardens of Stone National Park and Greater Blue Mountains World Heritage Area 		
	Gap and Genowlan Creeks	<ul style="list-style-type: none"> No greater impact than predicted in the EIS for water flow and quality 		

Condition Number / Reference	Condition of SSD_5581		Project Compliance Status	Evidence / Comments
	Emplacement of CHPP rejects	<ul style="list-style-type: none"> • Emplacement, and/or encapsulation and/or capping to prevent or minimise the migration of pollutants due to seepage from the REA 		<p>Review)notes that there has been no observable impact on surface water quality in 2017 attributable to mining operations.</p> <ul style="list-style-type: none"> ○ The Aquatic Ecology 2017 monitoring report (appendix to 2017 Annual Review) notes that a lack of any spatial trend in metal or nutrient concentrations in Airly Creek indicates that the mine continues to meet the EIS prediction of negligible environmental consequences to water quality. <p>Gap and Genowlan Creeks:</p> <ul style="list-style-type: none"> ○ the 2017 Annual Water Monitoring Report notes that no flow was observed in Gap Creek or Genowlan Creek during 2017 and that this is consistent with the relatively low rainfall during 2017. <p>Emplacement of CHPP rejects:</p> <ul style="list-style-type: none"> ○ not applicable - the Airly operation currently does not have a coal washery or a reject emplacement area. <p>Chemical and petroleum storage:</p> <ul style="list-style-type: none"> ○ a number of bundled hydrocarbon storage areas are utilised on site to prevent pollution events. ○ surface infrastructure upgrades are planned and approved, these included a new workshop, store, washdown area and fuel storage. <p>Aquatic and riparian ecosystems:</p> <ul style="list-style-type: none"> ○ The Airly Mine Water Management Plan requires geomorphic condition and watercourse stability monitoring to be undertaken every two years. It is understood that the next such monitoring is due to be undertaken in 2018 and that, in accordance with the plan, no such monitoring was undertaken during the audit period. ○ site specific surface water and groundwater quality trigger values and performance criteria developed with reference to ANZECC guidelines and historical monitoring data are documented in section 6 Airly Mine WMP.
	Chemical and petroleum storage	<ul style="list-style-type: none"> • Chemical and hydrocarbon products to be stored in bunded areas in accordance with relevant Australian Standards 		
	Aquatic and riparian ecosystems	<ul style="list-style-type: none"> • Maintain or improve baseline channel stability • Develop site-specific water quality objectives in accordance with ANZECC Guidelines and Using the ANZECC Guidelines and Water Quality Objectives in NSW procedures (DECC 2006) or its latest version 		

Condition Number / Reference	Condition of SSD_5581	Project Compliance Status	Evidence / Comments
<p>Schedule 4</p> <p>Condition 15</p>	<p>Water Management Plan</p> <p>Prior to carrying out any development under this consent, unless the Secretary agrees otherwise, the Applicant must prepare a Water Management Plan for the development to the satisfaction of the Secretary.</p> <p>This plan must:</p> <ol style="list-style-type: none"> be prepared in consultation with the DoE, EPA and DPI Water, by suitably qualified and experienced person/s whose appointment has been approved by the Secretary; include detailed performance criteria and describe measures to ensure that the Applicant complies with the Water Management Performance Measures (see Table 6); in addition to the standard requirements for management plans (see condition 3 of Schedule 6), this plan must include a: <ol style="list-style-type: none"> Site Water Balance, that: <ul style="list-style-type: none"> includes details of: <ul style="list-style-type: none"> sources and security of water supply, including contingency supply for future reporting periods; water use and management on site; any off - site water discharges; and reporting procedures, including the preparation of a site water balance for each calendar year; and investigates and implements all reasonable and feasible measures to minimise water use on site; Surface Water Management Plan, that includes: <ul style="list-style-type: none"> detailed baseline data on water flows and quality in the water courses that could potentially be affected by the development, including, but not limited to Gap, Genowlan and Airly Creeks; continuous flow monitoring at Airly village spring and the Grotto; provisions for the recalculation of site <ul style="list-style-type: none"> specific trigger values in relation to water discharges to Airly 	Compliant	<p>Water Management Plan has been prepared and the draft plan has been implemented. Airly is still awaiting the Department of Planning and Environment's approval of the Water Management Plan.</p> <p>Refer to Appendix A within the attached 2018 IEA Report (Appendix 1).</p>

Condition Number / Reference	Condition of SSD_5581	Project Compliance Status	Evidence / Comments
	<p>Creek once a minimum of two years data is obtained from the Airly Creek 'U/S' monitoring location (refer Appendix 9) in accordance with ANZECC guidelines;</p> <ul style="list-style-type: none"> • the provision and implementation of adaptive management measures to ensure that subsequent water discharges to Airly Creek comply with the recalculated site <ul style="list-style-type: none"> - specific trigger values derived from the Airly Creek 'U/S' monitoring location; • a detailed description of the water management system, including the: <ul style="list-style-type: none"> - clean water diversion systems; - erosion and sediment controls (mine water system); and - water management systems; • detailed objectives and performance criteria, including trigger levels for investigating any potentially adverse impacts associated with the development for: <ul style="list-style-type: none"> - downstream surface water quality; - downstream water users, including with respect to any subsidence - related flow reductions in Gap and Genowlan Creeks; - stream and riparian vegetation health in Gap, Genowlan and Airly Creeks within and immediately outside of the site; - design and management for the emplacement of coal reject materials; - reinstatement of drainage lines on the rehabilitated areas of the site; and - control of any potential water pollution from the rehabilitated areas of the site; • a program to monitor and report on: <ul style="list-style-type: none"> - effectiveness of the mine water management system; 		

Condition Number / Reference	Condition of SSD_5581	Project Compliance Status	Evidence / Comments
	<ul style="list-style-type: none"> - surface water flows, quality and geomorphology of the watercourses potentially affected by the development within and immediately outside of the site; - the performance measures listed in Table 6 including, but not limited to event-based monitoring of the hydrology, quality, ecotoxicology and chemical composition of water in Airly Creek under discharge conditions at points 5 and 6 (refer Appendix 9), or as otherwise determined in consultation with the EPA, to ensure that protection is provided to 99% of all species in the Gardens of Stone National Park and Greater Blue Mountains World Heritage Area in accordance with ANZECC Guidelines; • reporting procedures for the results of the monitoring program; and • a plan to respond to any exceedances of the performance measures, and repair, mitigate and/or offset any adverse surface water impacts of the development, including measures to provide compensatory water supply to any affected downstream water user under condition 13 of this Schedule; <p>iii. Groundwater Management Plan, which is consistent with DPI Water's guideline entitled Groundwater Monitoring and Modelling Plans –Introduction for prospective mining and petroleum activities, and includes:</p> <ul style="list-style-type: none"> • detailed baseline data of groundwater levels, yield and quality in the region that could be affected by the development, including licensed privately-owned groundwater bores and a detailed survey/schedule of groundwater dependent ecosystems (including springs and their discharge quantity and quality); • consultation with DPI Water on the installation of all new monitoring bores, the scheduled sampling and quality determination of parameters for monitoring bores; • groundwater assessment criteria including trigger levels for investigating any potentially adverse groundwater impacts; • a program to monitor and report on: <ul style="list-style-type: none"> - springs and their discharge quantity and quality; 		

Condition Number / Reference	Condition of SSD_5581	Project Compliance Status	Evidence / Comments
	<ul style="list-style-type: none"> - groundwater inflows transferred to the surface water management system; - the seepage/leachate from water storages and emplacements; - impacts of the development on: <ul style="list-style-type: none"> o regional and local (including alluvial) aquifers; o groundwater supply of potentially affected landowners; and o groundwater dependent ecosystems (including rules for the management of groundwater level impacts to protect GDEs), and riparian vegetation; • a program to monitor and report on stygofauna and hyporheic fauna; • a program to review and validate the groundwater model for the development, including independent expert review; and • a plan to respond to any exceedances of the performance measures. <p>The Applicant must implement the approved Water Management Plan for the development.</p>		
Schedule 4 Condition 16	<p>Independent Expert Review</p> <p>As part of any Independent Environmental Audit of the development (see condition 12 of schedule 6), the Applicant must commission an independent expert whose appointment has been endorsed by the Secretary, to carry out a review of the Groundwater Management Plan for the development, including the groundwater model. This review must include a:</p> <p>(a) review of all available monitoring data;</p> <p>(b) comparison of predicted and actual groundwater impacts; and</p> <p>(c) review of the effectiveness of the Groundwater Management Plan for the development, including the groundwater model</p>	Compliant	As part of the 2018 Independent Environmental Audit, Airly commissioned Greg Sheppard of Jacobs to undertake an independent expert review of the Groundwater Management Plan in accordance with the requirements of this condition. The review report is attached as Appendix E of the 2018 IEA Report (Appendix 1 of this document).
Schedule 4 Condition 17	<p>Biodiversity Management Plan</p> <p>Prior to carrying out any development under this consent that would cause surface</p>	Compliant	The Biodiversity Management Plan has been prepared and the draft plan has been implemented. Airly is still awaiting the Department of Planning and Environment's approval of the Biodiversity Management

Condition Number / Reference	Condition of SSD_5581	Project Compliance Status	Evidence / Comments
	<p>disturbance, the Applicant must prepare a Biodiversity Management Plan for the development to the satisfaction of the Secretary. This plan must:</p> <ul style="list-style-type: none"> a) be prepared in consultation with OEH and DoE; b) establish baseline data for the existing remnant vegetation and habitat on site, including mapping of the location of the <i>Pultenaea</i> sp. Genowlan Point; c) describe the short, medium, and long-term measures that would be implemented to manage the remnant vegetation and habitat on the site, including but not limited to; <ul style="list-style-type: none"> • <i>Prostanthera stricta</i> (Mt Vincent Mint-bush); • <i>Eucalyptus cannonii</i> (Capertee Stringybark); • <i>Pultenaea</i> sp. Genowlan Point; and • Genowlan Point <i>Allocasurina nana</i> Heathland; d) include a detailed description of the measures that would be implemented to: <ul style="list-style-type: none"> • minimise the impacts to fauna on site, including undertaking pre-clearance surveys; • avoid and mitigate the spread of <i>Phytophthora cinnamomi</i> (<i>P. cinnamomi</i>); • control weeds and feral pests including, but not limited to goats, rabbits, European Red Fox, cats and pigs; • manage salinity; • control erosion; • control access; and • manage bushfire risk; e) include a program to monitor and report on the effectiveness of these measures, and progress against the detailed performance and completion criteria; and 		<p>Plan.</p> <p>Refer to Appendix A within the attached 2018 IEA Report (Appendix 1).</p>

Condition Number / Reference	Condition of SSD_5581	Project Compliance Status	Evidence / Comments
	<p>f) include details of who would be responsible for monitoring, reviewing, and implementing the plan.</p> <p>The Applicant must implement the approved Biodiversity Management Plan for the development.</p> <p>Note: The Biodiversity Management Plan and Rehabilitation Management Plan need to be substantially integrated for achieving biodiversity objectives for the rehabilitated mine-site.</p>		
<p>Schedule 4</p> <p>Condition 20</p>	<p>Protection of Aboriginal Sites</p> <p>Unless otherwise authorised under the National Parks and Wildlife Act 1974, the Applicant must ensure that the development does not cause any direct or indirect impact on identified Aboriginal sites.</p> <p><i>Note: Aboriginal heritage sites are identified in Appendix 6.</i></p>	Compliant	<p>There was no harm caused to any Aboriginal sites during the reporting period.</p> <p>Airly Mine has prepared and implemented an Aboriginal Cultural Heritage Management Plan, and a Historic Heritage Management Plan in accordance with SSD_5581. The site has also installed additional mitigation fencing around several sites to help ensure they are protected.</p> <p>There were no non-compliances relating to heritage management during the reporting period. Refer to Section 4 of this document and Appendix A within the attached 2018 IEA Report (Appendix 1).</p>
<p>Schedule 4</p> <p>Condition 21</p>	<p>Heritage Management Plan</p> <p>Prior to carrying out any development under this consent that would cause surface disturbance, the Applicant must prepare a Heritage Management Plan for the development to the satisfaction of the Secretary. This plan must:</p> <ul style="list-style-type: none"> a) be prepared by suitably qualified and experienced person/s whose appointment has been endorsed by the Secretary; b) be prepared in consultation with OEH, Council, any relevant local historical organisations (in relation to non-Aboriginal heritage) and local Aboriginal stakeholders (in relation to Aboriginal heritage); c) include a description of the measures that would be implemented for: 	Compliant	<p>Airly Mine has prepared and implemented an Aboriginal Cultural Heritage Management Plan, and a Historic Heritage Management Plan in accordance with SSD_5581.</p> <p>There were no non-compliances relating to heritage management during the reporting period. Refer to Section 4 of this document and Appendix A within the attached 2018 IEA Report (Appendix 1).</p>

Condition Number / Reference	Condition of SSD_5581	Project Compliance Status	Evidence / Comments
	<ul style="list-style-type: none"> managing the discovery of human remains or previously unidentified heritage items on site; and ensuring any workers on site receive suitable heritage inductions and that suitable records are kept of these inductions; <p>d) include the following for the management of Aboriginal heritage:</p> <ul style="list-style-type: none"> a description of the measures that would be implemented for: <ul style="list-style-type: none"> protecting, monitoring and/or managing (including any proposed archaeological investigations and/or salvage measures) the heritage items identified in Appendix 5; managing the discovery of previously unidentified Aboriginal items on site; conserving the sites outside the surface disturbance area (see Appendix 5); maintaining and managing reasonable access for Aboriginal stakeholders to heritage items on site; ongoing consultation with the Aboriginal stakeholders in the conservation and management of Aboriginal cultural heritage on site; and e) include the following for the management of non-Aboriginal heritage items: <ul style="list-style-type: none"> a description of the measures that would be implemented for: <ul style="list-style-type: none"> protecting, monitoring and managing the heritage items identified in Appendix 6; and managing the discovery of previously unidentified cultural heritage items on site. <p><i>Note: This plan can be incorporated in a regional Aboriginal Cultural Heritage Management Plan for Centennial's other mines and mine infrastructure in the Lithgow Local Government Area.</i></p> <p>The Applicant must implement the approved Heritage Management Plan for the development.</p> 		

Condition Number / Reference	Condition of SSD_5581	Project Compliance Status	Evidence / Comments
<p>Schedule 4</p> <p>Condition 29 (e)</p>	<p>Rehabilitation Management Plan</p> <p>Prior to carrying out any development under this consent, unless the Secretary agrees otherwise, the Applicant must prepare a Rehabilitation Management Plan for the development to the satisfaction of the DRE. This plan must:</p> <p>(e) include the design and implementation of a Closure Groundwater Monitoring and Management Plan, which:</p> <ul style="list-style-type: none"> - assists in restoring natural groundwater flow to pre-mining conditions to the maximum extent possible; - includes the implementation of appropriate mitigation strategies to reduce adverse groundwater impacts to seeps, springs and flows in terms of acidity, salinity or location; - involves the removal of all non-natural material from within the mine not required for groundwater or subsidence management and describe measures that would be implemented to prevent polluting materials from entering the mine so as to not affect groundwater quality; 	Compliant	<p>The Rehabilitation Management Plan (RMP) required by this condition has been incorporated into the Mining Operations Plan, Airly Mine, 1 January 2018 to 31 December 2024 which was approved by DRG (formerly DRE) on 10 January 2018.</p> <p>A review of the MOP by the auditors during the 2018 IEA confirmed that it has been prepared generally in accordance with the ESG3; Mining Operations Plan (MOP) Guidelines September 2013. The review also indicated that the other requirements of this condition have generally been incorporated into the MOP. It is noted, however, that the requirement to include a Closure Groundwater Monitoring and Management Plan has been deferred until a time stated as "prior to closure". Given that the MOP / RMP has recently been approved by DRG it is therefore taken that it has been prepared to the satisfaction of DRG.</p> <p>Airly Mine did not complete any rehabilitation during 2017 as there is limited opportunity for any progressive rehabilitation to occur prior to the cessation of life-of-mine operations. The MOP indicates that rehabilitation activities to be completed during the term of the MOP will largely be confined to stabilisation, erosion control and revegetation of disturbed areas and maintenance and monitoring of areas of rehabilitation including:</p> <ul style="list-style-type: none"> ○ Progressive rehabilitation of exploration and/or groundwater monitoring sites; ○ Rehabilitation of areas affected by subsidence, as required; and ○ Maintenance and monitoring of areas of existing rehabilitation.

4. IMPLEMENTATION OF MANAGEMENT DOCUMENTS

Condition 1 of EPBC 2013/7606 lists the requirement for the preparation and implementation several management plans required by Development Consent SSD_5581.

Airly Mine has prepared, implemented and is operating in accordance with all approved environmental management plans. All approved management plans required under the Development Consent are available on the Centennial Airly website, <http://www.centennialcoal.com.au/Operations>.

The status management plans required by EPBC 2013/7606 is provided in Table 8. There were no non-compliances with any approved management plan during the reporting period.

Table 8. Management Plans required under EPBC 2013/7606 - Approval Status

Management Plan	Original Submission	Approved	Date Approved	Resubmitted	Approved	Date Approved
<p>Extraction Plan - Cliff Line Zone of First Workings</p> <p>Sub Management Plans:</p> <ul style="list-style-type: none"> • Subsidence Monitoring Program • Land Management Plan • Public Safety Management Plan • Biodiversity Management Plan • Water Management Plan • Heritage Management Plan 	19 th September 2017	Yes	16 th October 2018			
Extraction Plan – Splitting and Quartering		No			No	
Extraction Plan – Narrow Panel Extraction	Not yet required.	N/A				

Management Plan	Original Submission	Approved	Date Approved	Resubmitted	Approved	Date Approved
Airly Mine - Water Management Plan	28 April 2017	No	(Approved under extraction Plan on 16 October 2017)	23 July 2018	No	
Biodiversity Management Plan	1 February 2017	No		28 April 2017	No	
Aboriginal Cultural Heritage Management Plan	1 February 2017	Yes	27 October 2017			
Historic Heritage Management Plan	1 February 2017 (Resubmitted 31 March 2017)	No		22 June 2018	Yes	4 July 2018
Mining Operations / Rehabilitation Management Plan (incorporating the Closure Groundwater Management Plan)	28 July 2017	No		4 December 2017	No	MOP approved by DRG on 10 January 2018. Still waiting on RMP approval from DPE.

5. TRIGGER NOTIFICATIONS

There were no exceedances of monitoring parameters or EIS predictions and no trigger notifications for the 2017 reporting period.

APPENDIX 1 –

2018 INDEPENDENT ENVIRONMENTAL AUDIT REPORT



Centennial Coal