



**Centennial Coal**



***Ivanhoe No.2 Colliery***

***EPL 631***

**Environmental Monitoring Data**

**July 2018**

## **TABLE OF CONTENTS**

1. INTRODUCTION .....	1
2. AIR QUALITY MONITORING .....	2
3. SURFACE WATER QUALITY.....	3
3. INCIDENTS .....	3
4. COMPLAINTS.....	3
5. CORRECTION LOG.....	3
<b>Appendix 1</b> .....	<b>4</b>

## **FIGURES**

<b>Figure 1 - Depositional Dust 12-month rolling average July 2017 – June 2018</b> .....	<b>2</b>
--	----------

## **TABLES**

<b>Table 1 – Licence Information</b> .....	<b>1</b>
<b>Table 2 – Supporting Information for Monitoring Points</b> .....	<b>1</b>
<b>Table 3 – Depositional Dust (g/m<sup>2</sup>/month)</b> .....	<b>2</b>
<b>Table 4 – Water Quality Monitoring Results</b> .....	<b>3</b>

## 1. INTRODUCTION

As per conditions M1 to M5 of EPL 631, this report summarises environmental monitoring results for Ivanhoe No.2 Colliery for the July 2018 period. Monitoring sites are shown in Appendix 1.

A summary of the licence information is provided in the following tables.

Table 1 shows the licence information and Table 2 summarises the dates and units for monitoring data for the reporting period. LDP002 and LDP004 did not discharge during the reporting period and therefore sampling of discharge was not required.

**Table 1 – Licence Information**

Environment Protection Licence Number	631
Licensee's Name	Ivanhoe Coal Pty Ltd
Licensee's Address	Level 18, BT Tower, 1 Market Street Sydney NSW 2000
Link to full license on the EPA website	<a href="http://www.epa.nsw.gov.au/prpoeoapp/ViewPOEOLicence.aspx?DOCID=31062&amp;SYSUID=1&amp;LICID=631">http://www.epa.nsw.gov.au/prpoeoapp/ViewPOEOLicence.aspx?DOCID=31062&amp;SYSUID=1&amp;LICID=631</a>

**Table 2 – Supporting Information for Monitoring Points**

Parameter	Monitoring Frequency	Unit of Measure	July 2018	
			Sampling Date	Published Date
LDP002 (Point 2) Oil & Grease	Monthly during discharge	mg/L	No discharge	NA
LDP002 (Point 2) pH	Monthly during discharge	pH units	No discharge	NA
LDP002 (Point 2) Total Suspended Solids	Monthly during discharge	mg/L	No discharge	NA
LDP002 (Point 2) Filterable iron	Monthly during discharge	mg/L	No discharge	NA
LDP004 (Point 4) Oil & Grease	Monthly during discharge	mg/L	No discharge	NA
LDP004 (Point 4) pH	Monthly during discharge	pH units	No discharge	NA

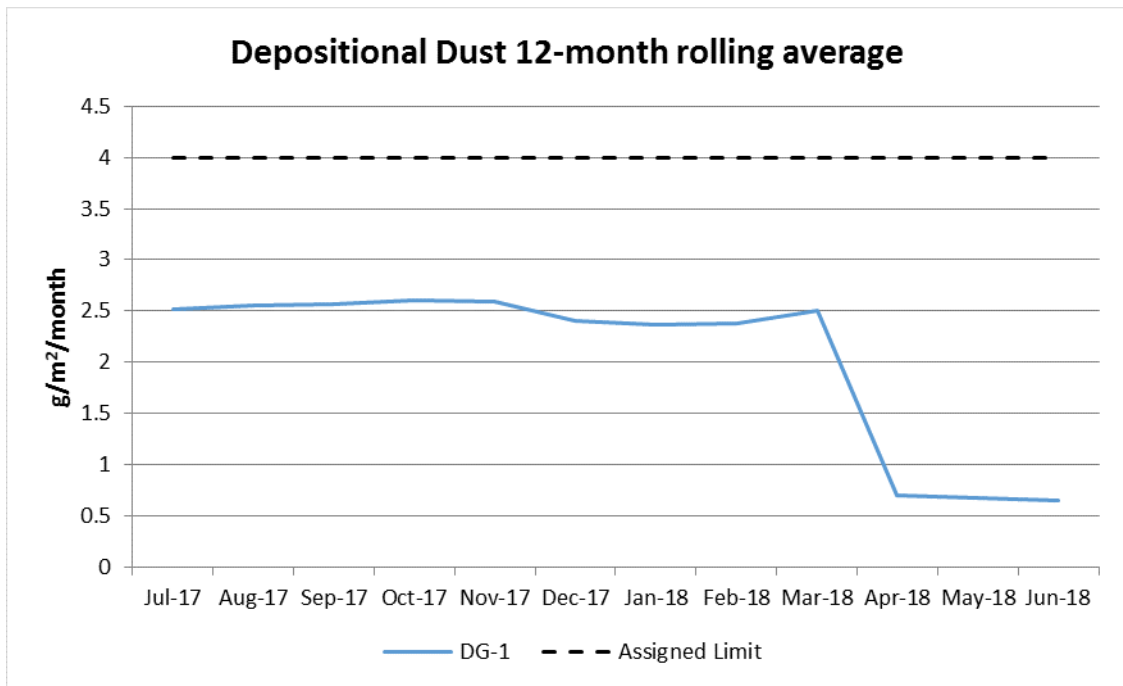
**2. AIR QUALITY MONITORING**

The air quality monitoring results for the reporting period are summarised in Table 3.

**Table 3 – Depositional Dust (g/m<sup>2</sup>/month)**

<b>DG-1</b>
<0.1

EPL 631 does not require air quality to be monitored and hence does not include a licence limit for depositional dust. A 12-month rolling average air quality criteria of 4 g/m<sup>2</sup>/month is commonly used for comparison purposes (Figure 1).



**Figure 1 - Depositional Dust 12-month rolling average July 2017 – June 2018**

### 3. SURFACE WATER QUALITY

Surface water pH, Total Suspended Solids, Filterable Iron and Oil & Grease are monitored at LDP002 during discharges (Table 4). Surface water pH and Oil & Grease are monitored at LDP004 during discharges. There were no discharges from LDP002 or LDP004 in July 2018 therefore there were no opportunities to collect samples.

**Table 4 – Water Quality Monitoring Results**

Discharge Point	Parameter	Unit of Measure	EPA Limit	July 2018 Results
LDP002	pH	pH	6.5 – 8.5	NA
LDP002	Total Suspended Solids	mg/L	30	NA
LDP002	Filterable Iron	mg/L	3	NA
LDP002	Oil & Grease	mg/L	10	NA
LDP004	pH	pH	6.5 – 8.5	NA
LDP004	Oil & Grease	mg/L	10	NA

### 3. INCIDENTS

No incidents occurred at Ivanhoe No.2 Colliery during the reporting period.

### 4. COMPLAINTS

No complaints were received in regard to Ivanhoe No.2 Colliery during the reporting period.

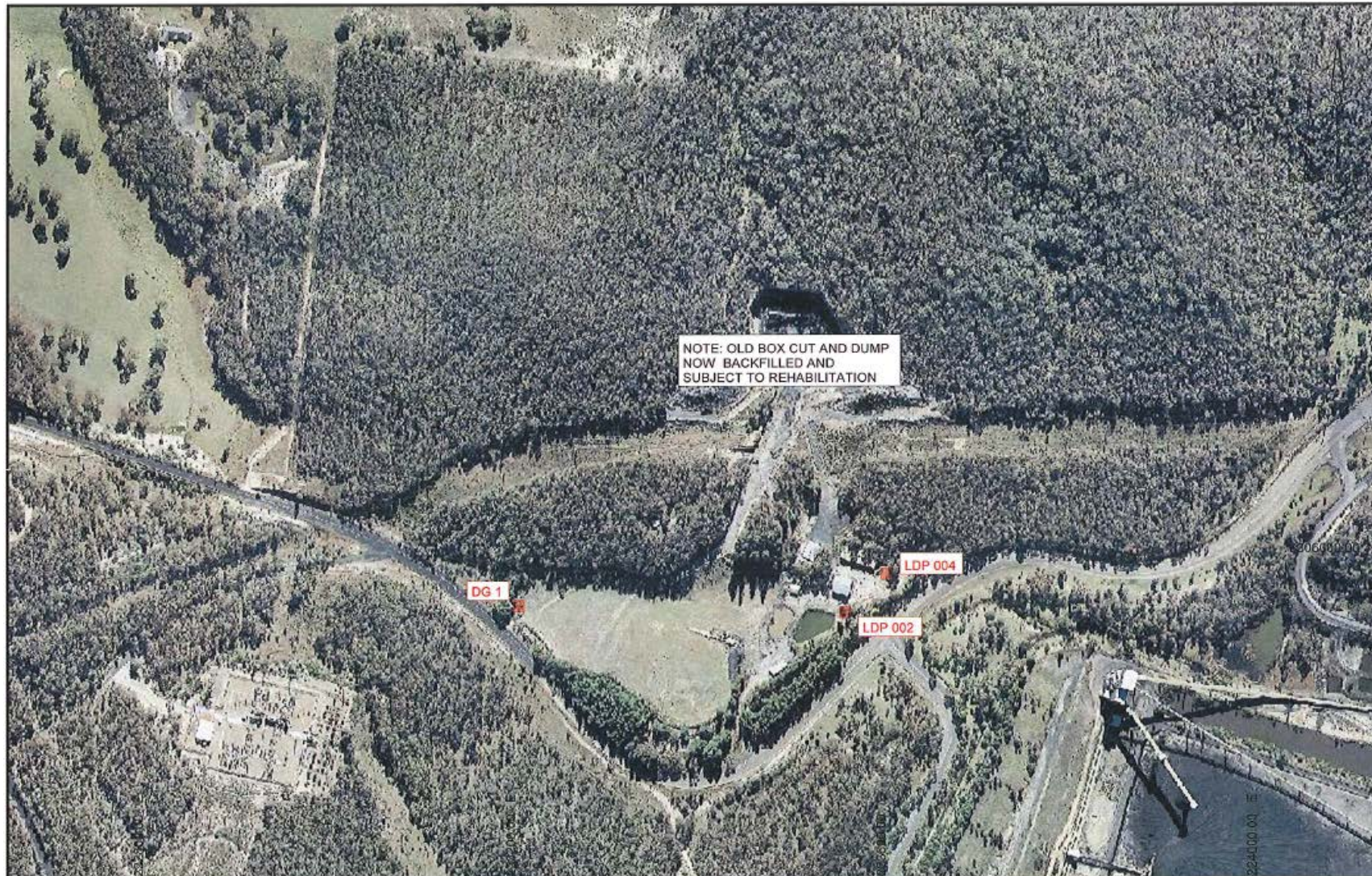
### 5. CORRECTION LOG


No corrections to previously published data are required.

## **Appendix 1**

### **Monitoring Site Locations**

Environmental Monitoring Results Summary – Ivanhoe No.2 Colliery – July 2018



	<b>CRAVEN, ELLISTON &amp; HAYES (LITHGOW) PTY LIMITED</b> CONSULTING LAND, ENGINEERING & MINING SURVEYORS "Astrolabe", Rutherford Lane, Lithgow, NSW, 2790 Phone: (02) 6351 2281 Fax: (02) 6352 1339 Email: survey@ceh.com.au		DATE	12/07/2012	<b>IVANHOE NO. 2</b> ENVIRONMENTAL MONITORING SITES LOCATION PLAN SCALE - 1:4000      DATUM: MGA (Zone 56) / AHD	DRAWING No:	IVN2:LDP001
	AMENDED						
	SURVEYOR	AM/GM					
	DRAWN	G MUIR					
	CHECKED	R HUNT					
				CCAD6 JOB & DWG: <small>IVN120713 - IVN2:LDP001</small>			

Border size = 370mm x 267mm on A3 paper.