

# STANDARD OPERATING PROCEDURE

**SV-MS-040**

**TITLE: SMP Community Consultation Process**

Prepared by: Natalie Conroy

Date: March 2015

Approved by: Jacques Le Roux

Review Frequency: 3 Years

## SCOPE

This document outlines Springvale's Subsidence Community Consultation Process (SCCP) as mandated under the Springvale Subsidence Management Plan (SMP) Approval. The Guideline for Applications for Subsidence Management Approvals has been followed during the preparation of the document.

"Community" is defined by the Guideline for Applications for Subsidence Management Approvals as "Anyone who is interested in or affected by subsidence issues associated with the proposed mining project."

## RESPONSIBILITIES

The Springvale Environment and Community Coordinator is responsible for the continuing management of this process.

The Springvale Mine Manager is responsible for ensuring that sufficient resources are available to implement the requirements of this Process

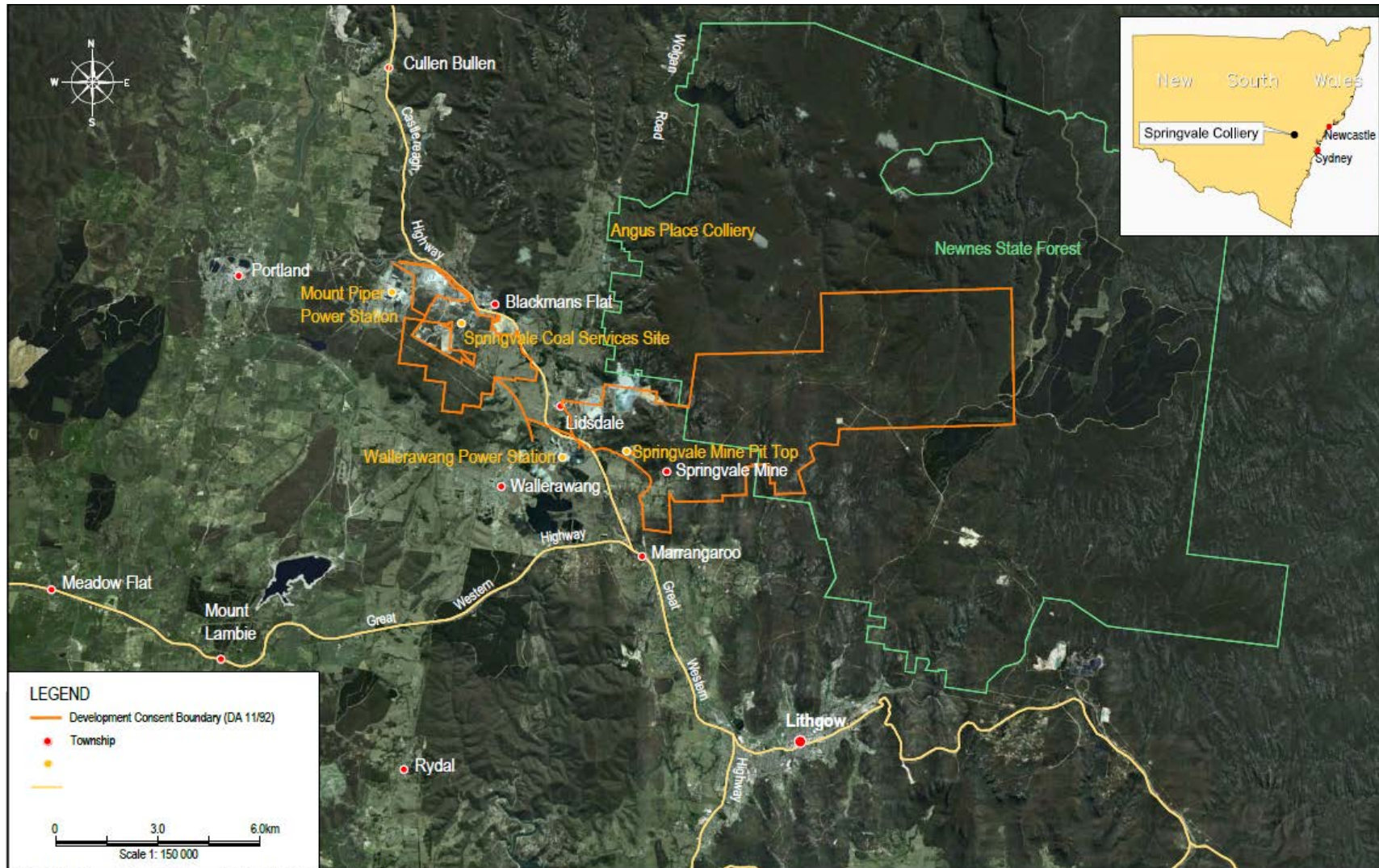
## BACKGROUND

Springvale Colliery has been using longwall mining to extract coal from beneath the Newnes Plateau and its surrounds since 1995 and currently operates under a SMP Approval (Figure 1).

The land overlying the SMP area is State Forest and contains no private landholdings and very little infrastructure (refer to Figure 2). The only public infrastructure above the mining area is Forests NSW tracks and a 66Kv Integral Energy power line. The area is managed by Forests NSW.

The Newnes State Forest is an area of State Forest that comprises approximately 25,000 hectares (ha) of pine plantation and remnant vegetation that is selectively logged under Forest NSW tenure.

In addition to the timber industry, the Newnes State Forest also supports a number of recreational land uses, with activities dependent on natural landscape qualities. Users of the area for recreational purposes include bushwalkers, hunters, cyclists, motorcyclists and motorists.



V:\633.10016 Springvale\Figures\CAD\Current\Fg1\_633.10016\_Location Plan\_130802.dwg  
Prepared by SLR Consulting - To be printed A4

Springvale Mine  
Regional Locality Plan

**FIGURE 1**



Figure 2 – The mine layout illustrates the subsidence management area on the Newnes Plateau.



## KEY STAKEHOLDERS

Table 1 The key stakeholders that Springvale will consult with for the life of the mine are detailed below.

Stakeholder Group	Specific Stakeholders
State Government	FCNSW Sydney Catchment Authority NSW Department of Industry & Investment Department of Planning & Infrastructure Office of Water Office of Environment and Heritage
Local Government	Lithgow City Council
Non-Government Organisations	Colong Foundation Blue Mountains Conservation Society
Indigenous Groups	Gundungurra LC Bathurst Land Council
Landholders adjoining	Western Region Community Consultative Committee

## CONSULTATION

Table 2 The communications tools used to keep our stakeholders informed of the progress of the subsidence management plan is detailed below.

Rationale	Communication Tool
Complaint or enquiry	<p>Provide all stakeholders with an opportunity to meet face to face</p> <p>Continue to foster trust by engaging directly with affected landholders on a priority basis</p>
Reporting SMP Performance	<p>Mail or email quarterly subsidence management reports to all stakeholders.</p> <p>The reports include a mechanism for stakeholders to provide feedback.</p>
Reporting End of Panel	<p>Mail or email end of panel reports to all stakeholders.</p> <p>EOP meeting will be held on request.</p>
Annual Environmental Monitoring Plan	<p>Mail or email the annual report to all stakeholders</p> <p>Provide a briefing for all stakeholders on the annual results monitoring results.</p> <p>The annual environmental monitoring reports are available on the Springvale webpage.</p>
Community Consultation Committee	<p>The committee has an independent chairperson who can be contacted to represent community views to the mine.</p> <p>The committee formally meets twice a year, however extraordinary meeting are held as required.</p>

## REVIEW

Reviews are also scheduled through the Business Management Framework utilizing the Compliance Data Base. Both systems are calibrated to a common review date.

Audits shall be conducted in compliance with the Audit Process SVMP-0001.

Reviews shall be conducted in compliance with the Review Process SVMP-0001.



APPENDIX 1

2005-2006

**SUBSIDENCE COMMUNITY CONSULTATION PROCESS**

This Subsidence Community Consultation Process has been developed in accordance with Section 7.4 of the Guideline for Applications for Subsidence Management Approvals.

Table 3. Subsidence community consultation process requirements during SMP application

Guideline Section 7.4 Requirements	Consultation Process
Mechanisms for the community to monitor and comment on the implementation of the SMP in relation to the progress of the mining operation	Four monthly Subsidence Management Status Report. CCC Meetings
Systems such as individual consultation with community members, committees, advisory panels	Community consultation meeting and site inspection with interested parties / relevant stakeholders following advertisement. Opportunity to provide comment – prior to preparation of SMP application. Inter-agency meeting and inspection. Continuing consultation
Regular reporting / review, etc to ensure effective communication between the applicant and the community, in order to facilitate fair and informed discussions / decision making in relation to subsidence management.	Four monthly Subsidence Management Status report provides opportunity for relevant stakeholders to comment and request additional information relating to approved management plans and processes.
In particular how the identified subsidence issues causing significant community concerns will be taken into account in the SMP	Following responses from interested parties / relevant stakeholders, issues raised were addressed in SMP application. Provision of a draft copy of report section of application to environmental groups for comment and meeting to discuss particular concerns.
Mechanisms to record and respond to community enquires, concerns or complaints	All relevant stakeholders have the Environment and Community Coordinator's contact details.  In the case of an enquiry, concern, complaint or incident, Springvale's Environmental Incident Report Procedure SV-MS-027-WP-528
Mechanisms to facilitate conflict management	In the event of a dispute or conflict that cannot be resolved through the SCCP initiatives, Springvale will assess all correspondence / complaints and provide a copy to the DPI -MR. Resolution may require the referral to an Independent Dispute Facilitator to be appointed in consultation with the DPI-MR.
Any other site-specific procedural protocols to ensure management outcomes that are consistent with government policies, taking into account community expectations	Reporting under SMP Conditions, four monthly Subsidence Management Status Reports, regular correspondence with Government Department representatives,



## **CONSULTATION DURING THE APPLICATION PROCESS**

A community consultation strategy developed by International Environmental Consultants Pty Ltd titled "Outline of Consultation Process Required for Secondary Workings SMP's for Clarence, Springvale and Angus Place" identified potential stakeholders or community and government agencies with an interest in the proposed mining project or the SMP application.

Springvale Colliery notified all of the interested parties identified by the community consultation strategy. A letter dated 21st June 2004 was sent to community representatives, stakeholders, landowners and government agencies regarding the intention to prepare a SMP to accompany an application to the DMR for approval to carry out secondary extraction in ML 1326. The letter also invited recipients to a meeting on 21st July 2004 to commence community consultation and obtain input into the development of the SMP application.

A presentation on the Springvale SMP process, took place on the 21st August 2004. The presentation included information on the SMP process, the mining area and method, historic subsidence, SMP area, background studies and environmental monitoring for Springvale and Angus Place Collieries. Minutes were drafted after the conclusion of the consultation meeting recording the information presented at the meeting and attendees.

Following the SMP presentation, an inspection of the SMP application area involved all attendees visiting the Newnes State Forest. Inspection of the SMP area gave community members the opportunity to observe any previous subsidence impacts from longwall mining at Angus Place and Springvale Collieries and to obtain a perspective on the SMP application area.

To conclude the meeting a session for questions on the SMP process and the information presented during the day did not raise any additional issues for discussion. Details on how community members could provide input on the matters they considered should be addressed in the preparation of the SMP were provided. Written submissions were invited from all attendees to be forwarded to the Centennial Coal Company Ltd, Regional Environmental Co-ordinator West by the 10 September 2004.

Springvale also developed a community feedback form so community members could provide the mine with information on matters they considered should be addressed in the preparation of the SMP. The community feedback form was mailed to any community inquiry received in response to the SMP advertisement.

In conjunction with the feedback form a community consultation log recorded the details of consultation with community members on the SMP preparation.

### **SMP Advertisement**

In August 2004, Springvale Colliery placed an advertisement in the "Lithgow Mercury" and "The Land" to notify the community of the intention to submit an SMP application for approval. The advertisement provided a mechanism for interested parties to provide input into the preparation of the draft SMP. The advertisement included a map of the SMP application, Mine Lease boundaries, the existing Springvale Colliery workings and regional locality.



## Results of Community Consultation

Following the community consultation meeting and site inspection two submissions were received from The Colong Foundation for Wilderness Ltd and the Blue Mountains. A summary of the issues raised by these two stakeholders and where they are referenced in the SMP was also included in the application.

### Community Consultation – SMP Preparation Process

A draft SMP Application Written Report and some Appendices were distributed to DMR, Forests NSW, Colong Foundation for Wilderness Ltd and the Blue Mountains Conservation Society.

Forests NSW advised that they were satisfied with the content of the document.

A meeting was held with Chris Harvey (Mineral Resources) to discuss and review the document.

Correspondence was received from both The Colong Foundation for Wilderness Ltd and the Blue Mountains Conservation Society raising various issues and concerns.

The main items of concern related to swamps, watercourses and groundwater.

Following receipt of these comments an additional report (Appendix H of the SMP Application) was prepared to address the main concerns.

A meeting was held on 18 April 2005 with Mr. K. Muir (Colong Foundation for Wilderness) and Mr. J. Angel (Total Environment Centre) to discuss these concerns.

## ONGOING CONSULTATION

The SMP Application was lodged on 9 June 2005 and a copy of the application was provided to each relevant stakeholder, advertisements placed in appropriate newspapers (“Sydney Morning Herald” and “Lithgow Mercury”) and the SMP application was placed on public display for the required period.

An inter-agency information meeting and site inspection was held on 11 August 2005 to provide an outline of the SMP application. This also provided an opportunity to address any concerns and answer questions relating to the application. All inter-agency members were provided with contact details for any additional enquiries.

Three submissions were received from Blue Mountains Conservation Society, Colong Foundation and Total Environment Centre (joint submission) and Forest NSW. These submissions were also provided to Mineral Resources. Responses to these submissions were provided to Mineral Resources prior to the inter agency meeting.

Following approval, on 7 March 2006, consultation has continued in compliance with the approval conditions, consisting of various notifications and consultation with appropriate relevant stakeholders during the development of various required programs and management plans.

Additionally, further information and consultation opportunities are provided through reporting processes, predominately the Subsidence Management Status Reports and the Review Schedule.